

Human SLITRK1 (His & Fc Tag) recombinant protein



Catalog Number: 503036

General Information

Gene Name Synonym

Leucine-rich repeat-containing protein 12

Protein Construction

A DNA sequence encoding the extracellular domain (Met 1-Ser 616) of human SLITRK1 (NP_443142.1) was fused with the C-terminal polyhistidine-tagged Fc region of human IgG1 at the C-terminus.

Organism

Human

Expression Host

Human Cells

QC Testing

Purity

> 90 % as determined by SDS-PAGE

Endotoxin

< 1.0 EU per μg of the protein as determined by the LAL method

Stability

Samples are stable for up to twelve months from date of receipt at -70°C

Predicted N terminal

Asn 18

Molecular Mass

The recombinant human SLITRK1/Fc chimera is a disulfide-linked homodimeric protein after

removal of the signal peptide. The reduced monomer consists of 846 amino acids and predicts a molecular mass of 95 kDa. As a result of glycosylation, the apparent molecular mass of rhSLITRK1/Fc monomer is approximately 130-150 kDa in SDS-PAGE under reducing conditions.

Formulation

Lyophilized from sterile 100mM Glycine, 10mM NaCl, 50mM Tris, pH 7.5

1. 5 % trehalose and mannitol are added as protectants before lyophilization.
2. Please contact us for any concerns or special requirements.

Usage Guide

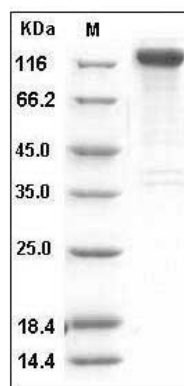
Storage

Store it under sterile conditions at -20°C to -80°C . It is recommended that the protein be aliquoted for optimal storage. Avoid repeated freeze-thaw cycles.

Reconstitution

Adding sterile water, prepare a stock solution of 0.25 mg/ml. Concentration is measured by UV-Vis.

SDS-PAGE



Human SLITRK1 Protein (His & Fc Tag) SDS-PAGE