

GLRX3 antibody



Catalog Number: 111036

Product name

GLRX3 antibody

IHC: 1:20-1:200

IF: 1:10-1:100

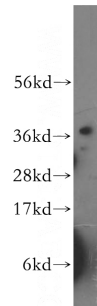
Specificity

Human, Mouse, Rat; other species not tested.

Validations

Antibody description

GLRX3 Rabbit Polyclonal antibody. Positive IHC detected in human colon cancer tissue, human ovary tumor tissue. Positive IF detected in Hela cells. Positive WB detected in human brain tissue, Jurkat cells. Observed molecular weight by Western-blot: 37kd



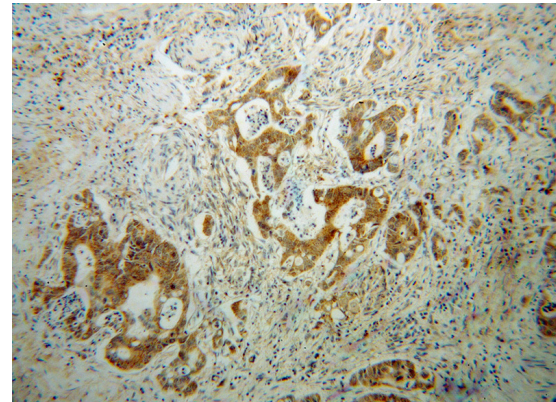
Preparation

This antibody was obtained by immunization of GLRX3 recombinant protein (Accession Number: BC014372). Purification method: Antigen affinity purified.

human brain tissue were subjected to SDS PAGE followed by western blot with Catalog No:111036(GLRX3 antibody) at dilution of 1:600

Formulation

PBS with 0.1% sodium azide and 50% glycerol pH 7.3.



Storage

Store at -20°C. DO NOT ALIQUOT

Clonality

Polyclonal

Immunohistochemical of paraffin-embedded human colon cancer using Catalog No:111036(GLRX3 antibody) at dilution of 1:50 (under 10x lens)

Ig Type

Rabbit IgG

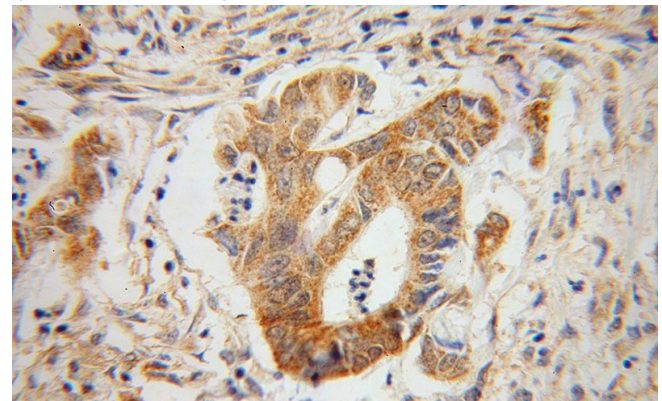
Applications

ELISA, WB, IHC, IF

Dilutions

Recommended Dilution:

WB: 1:200-1:2000

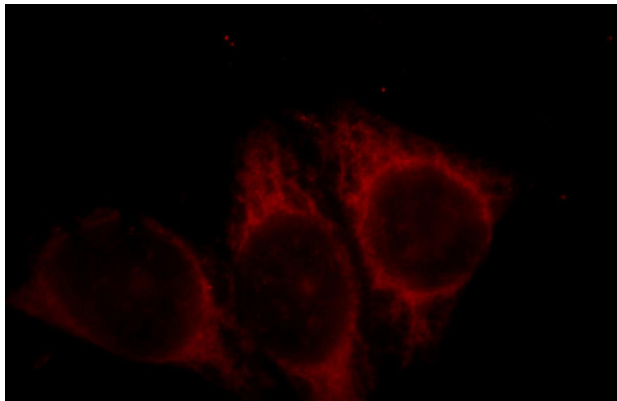


Immunohistochemical of paraffin-embedded

GLRX3 antibody

Catalog Number: 111036

human colon cancer using Catalog No:111036(GLRX3 antibody) at dilution of 1:50 (under 40x lens)



Immunofluorescent analysis of HeLa cells, using GLRX3 antibody Catalog No:111036 at 1:25 dilution and Rhodamine-labeled goat anti-rabbit IgG (red).