

Mertansine (DM1) Monoclonal Antibody



Catalog Number: 176726

Product name

Mertansine (DM1) Monoclonal Antibody

Specificity

Chemical

Antibody description

Product has been tested in direct ELISA.

Preparation

DM1 conjugated with BSA, Protein G affinity purified

Formulation

PBS(pH7.4), lyophilized. **Reconstitution: Adding sterile water, prepare a stock solution of 2.0 mg/ml.**

Storage

Store at -20°C. Avoid freeze / thaw cycles.

Clonality

Monoclonal

Ig Type

Mouse IgG2b, κ

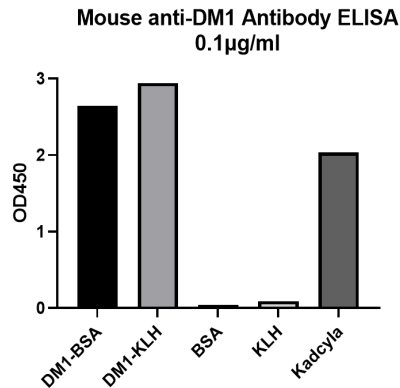
Applications

ELISA

Dilutions

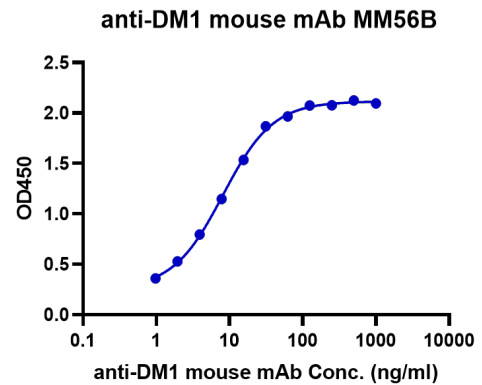
ELISA: 1:5,000-1:20,000

Validations



ELISA Binding Assay of Anti-DM1 Antibody to different proteins.

ELISA analysis of Anti-DM1 Monoclonal Antibody with DM1-BSA, DM1-KLH, BSA, KLH and Kadcylla. Anti-DM1 Monoclonal Antibody can bind to DM1-BSA, DM1-KLH or DM1 ADC but not carrier



proteins.

ELISA Binding Assay of Anti-DM1 Antibody

Immobilized DM1 ADC at 1 μ g/mL (100 μ L/well) can bind anti-DM1 mouse monoclonal antibody.