

Anti-SPON2 Rabbit antibody



Catalog Number: 166726

Product name

Anti-SPON2 Rabbit antibody

Specificity

Human, Mouse, Rat

Antibody description

SPON2 Rabbit polyclonal antibody

Preparation

Antigen: A synthetic peptide of human SPON2

Formulation

Supplied in 50nM Tris-Glycine(pH 7.4), 0.15M NaCl, 40%Glycerol, 0.01% sodium azide and 0.05% BSA.

Storage

Store at -20°C. Stable for 12 months from date of receipt.

Clonality

Polyclonal

Ig Type

Rabbit IgG

Applications

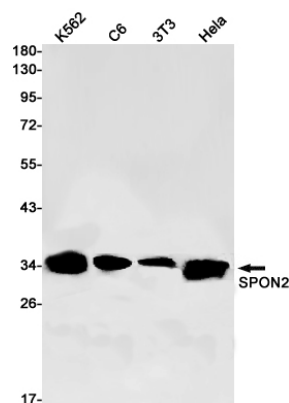
WB, FC

Dilutions

WB: 1/1000

FC: 1/20-1/100

Validations



Western blot detection of SPON2 in K562, C6, 3T3, HeLa cell lysates using SPON2 Rabbit pAb(1:1000 diluted). Predicted band size: 36kDa. Observed band size: 36kDa.