

KHDRBS1 Polyclonal Antibody



Catalog Number: 164726

Product name

KHDRBS1 Polyclonal Antibody

Specificity

Human, Mouse, Rat

Antibody description

Polyclonal antibody to KHDRBS1

Preparation

Antigen: A synthetic peptide corresponding to a sequence within amino acids 300 to the C-terminus of human KHDRBS1 (NP_006550.1).

Formulation

PBS with 0.02% sodium azide, 50% glycerol, pH7.3.

Storage

Store at -20°C. Avoid freeze / thaw cycles.

Clonality

Polyclonal

Ig Type

Rabbit IgG

Applications

WB, IHC, IF

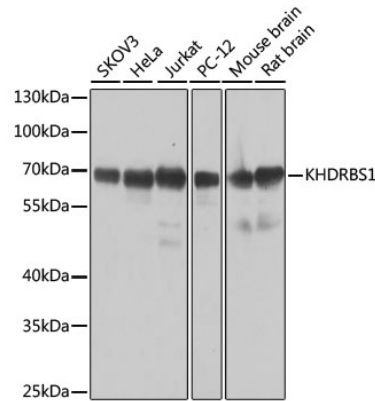
Dilutions

WB 1:500 - 1:2000

IHC 1:100 - 1:200

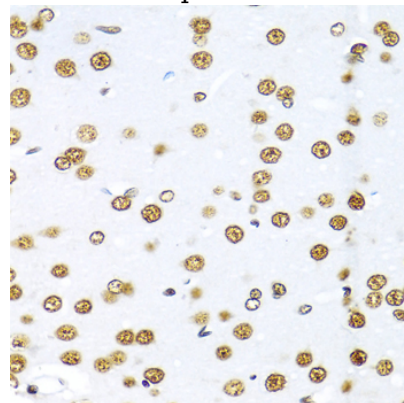
IF 1:50 - 1:200

Validations



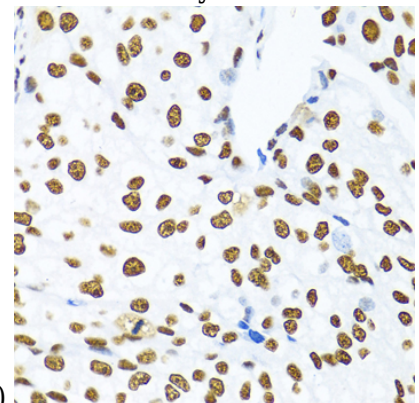
Western blot - KHDRBS1 Polyclonal Antibody

Western blot analysis of extracts of various cell lines, using KHDRBS1 antibody at 1:1000 dilution. Secondary antibody: HRP Goat Anti-Rabbit IgG (H+L) at 1:10000 dilution. Lysates/proteins: 25ug per lane. Blocking buffer: 3% nonfat dry milk in TBST. Detection: ECL Basic Kit. Exposure time: 10s.



Immunohistochemistry - KHDRBS1 Polyclonal Antibody

Immunohistochemistry of paraffin-embedded rat brain using KHDRBS1 antibody at dilution of



1:100 (40x lens).

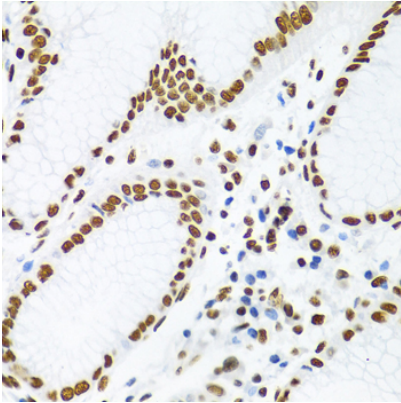
KHDRBS1 Polyclonal Antibody



Catalog Number: 164726

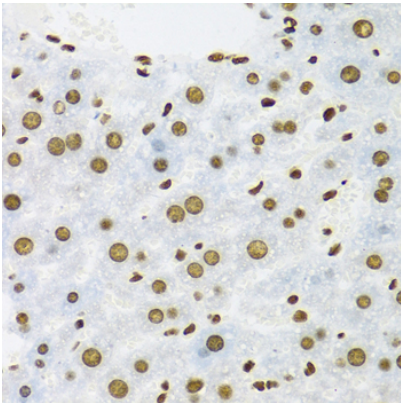
Immunohistochemistry - KHDRBS1 Polyclonal Antibody

Immunohistochemistry of paraffin-embedded human prostate cancer using KHDRBS1 antibody at dilution of 1:100 (40x lens).



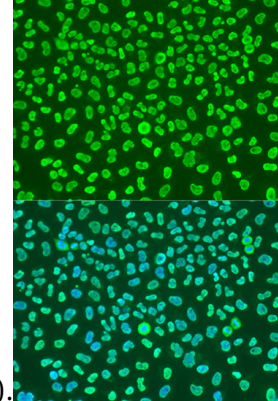
Immunohistochemistry - KHDRBS1 Polyclonal Antibody

Immunohistochemistry of paraffin-embedded human stomach using KHDRBS1 antibody at dilution of 1:100 (40x lens).



Immunohistochemistry - KHDRBS1 Polyclonal Antibody

Immunohistochemistry of paraffin-embedded mouse liver using KHDRBS1 antibody at dilution



of 1:100 (40x lens).

Immunofluorescence - KHDRBS1 Polyclonal Antibody

Immunofluorescence analysis of U2OS cells using KHDRBS1 antibody at dilution of 1:100. Blue: DAPI for nuclear staining.