

TLE3 antibody

Catalog Number: 107626

Product name

TLE3 antibody

IP: 1:200-1:2000

IHC: 1:20-1:200

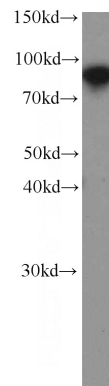
Specificity

Human; other species not tested.

Validations

Antibody description

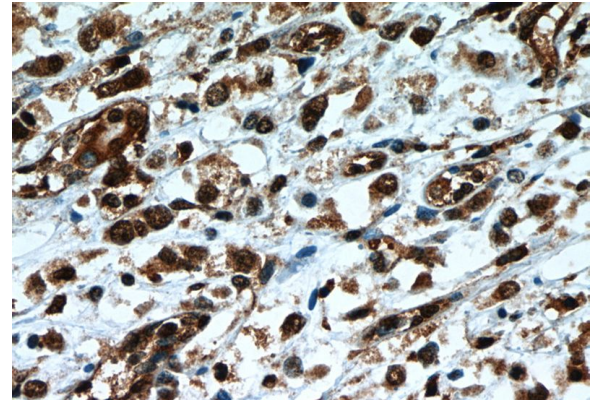
TLE3 Mouse Monoclonal antibody. Positive IHC detected in human breast cancer tissue. Positive WB detected in 293 cells, human brain tissue. Positive IP detected in HEK-293 cells. Observed molecular weight by Western-blot: 90 kDa



Preparation

This antibody was obtained by immunization of TLE3 recombinant protein (Accession Number: BC015729). Purification method: Protein G purified.

HEK-293 cells were subjected to SDS PAGE followed by western blot with Catalog No:107626(TLE3 antibody) at dilution of 1:1000



Formulation

PBS with 0.02% sodium azide and 50% glycerol pH 7.3.

Storage

Store at -20°C. DO NOT ALIQUOT

Clonality

Monoclonal

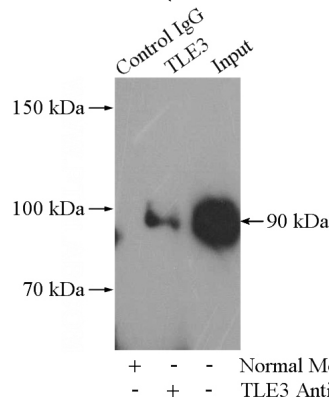
Immunohistochemistry of paraffin-embedded human breast cancer slide using Catalog No:107626(TLE3 Antibody) at dilution of 1:50

Ig Type

Mouse IgG1

Applications

ELISA, WB, IHC, IP



Dilutions

Recommended Dilution:

WB: 1:500-1:5000

+ - - Normal Mouse IgG
- + - TLE3 Antibody

IP Result of anti-TLE3 (IP:Catalog No:107626, 5ug; Detection:Catalog No:107626 1:500) with

TLE3 antibody



Catalog Number: 107626

HEK-293 cells lysate 1480ug.