

# Anti-phospho-Smad2 (Ser250) Rabbit antibody



Catalog Number: 167626

## Product name

Monoclonal

Anti-phospho-Smad2 (Ser250) Rabbit antibody

## Ig Type

Rabbit IgG

## Specificity

Human, Mouse, Rat

## Applications

WB, FC

## Antibody description

phospho-Smad2 (Ser250) Rabbit monoclonal antibody

## Dilutions

WB: 1/1000

## Preparation

FC: 1/20

Antigen: A synthetic phosphopeptide corresponding to residues surrounding Ser250 of human Smad2

## Validations

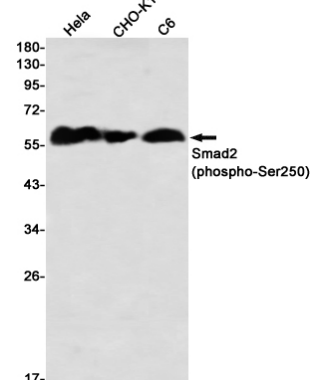
## Formulation

50nM Tris-Glycine(pH 7.4), 0.15M NaCl, 40%Glycerol, 0.01% sodium azide and 0.05% BSA

## Storage

Store at 4°C short term. Store at -20°C long term. Avoid freeze / thaw cycle.

## Clonality



Western blot detection of Smad2 (phospho-Ser250) in HeLa, CHO-K1, C6 using Smad2 (phospho-Ser250) Rabbit mAb(1:1000 diluted)