

B4GALT7 Polyclonal Antibody



Catalog Number: 166626

Product name

B4GALT7 Polyclonal Antibody

Specificity

Human, Mouse

Antibody description

Polyclonal antibody to B4GALT7

Preparation

Antigen: A synthetic Peptide of human B4GALT7

Formulation

PBS with 0.02% sodium azide, pH7.3.

Storage

Store at 4°C. Avoid freeze / thaw cycles.

Clonality

Polyclonal

Ig Type

Rabbit IgG

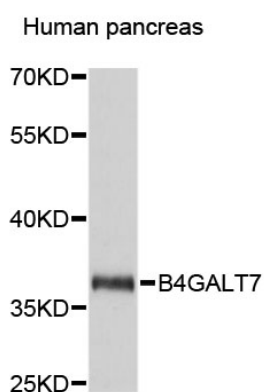
Applications

WB

Dilutions

WB 1:500 - 1:1000

Validations



Western blot - B4GALT7 Polyclonal Antibody

Western blot analysis of extracts of human pancreas, using B4GALT7 antibody .Secondary antibody: HRP Goat Anti-Rabbit IgG (H+L) at 1:10000 dilution.Lysates/proteins: 25ug per lane.Blocking buffer: 3% nonfat dry milk in TBST.