

# Human LCN1/Lipocalin 1 (His Tag) recombinant protein



Catalog Number: 502626

## General Information

### Protein Construction

A DNA sequence encoding the human LCN1 (NP\_002288.1) extracellular domain (Met 1-Asp176) was fused with a polyhistidine tag at the C-terminus.

### Organism

Human

### Expression Host

Human Cells

## QC Testing

### Activity

Measured by its ability to inhibit active Cathepsin V cleavage of a fluorogenic peptide substrate Z-LR-AMC, (R&D Systems, Catalog # ES008). The IC<sub>50</sub> value is < 400 nM.

### Purity

> 95 % as determined by SDS-PAGE

### Endotoxin

< 1.0 EU per µg of the protein as determined by the LAL method

### Stability

Samples are stable for up to twelve months from date of receipt at -70°C

### Predicted N terminal

His 19

### Molecular Mass

The secreted recombinant human LCN1 consists of 169 amino acids and has a predicted molecular mass of 19 kDa. The apparent molecular mass of the protein is approximately 20 kDa in SDS-PAGE under reducing conditions.

### Formulation

Lyophilized from sterile PBS, pH 7.4

1. 5 % trehalose and mannitol are added as protectants before lyophilization.

2. Please contact us for any concerns or special requirements.

## Usage Guide

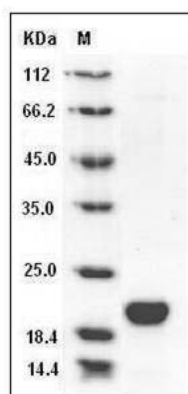
### Storage

Store it under sterile conditions at -20°C to -80°C. It is recommended that the protein be aliquoted for optimal storage. Avoid repeated freeze-thaw cycles.

### Reconstitution

Adding sterile water, prepare a stock solution of 0.25 mg/ml. Concentration is measured by UV-Vis.

### SDS-PAGE



Human LCN1 / VEGF / Lipocalin-1 Protein (His Tag) SDS-PAGE