

Anti-CUBN antibody



Catalog Number: 141626

Product name

Anti-CUBN antibody

Specificity

Human cubilin / CUBN

Antibody description

Rabbit Polyclonal to Human CUBN

Preparation

Produced in rabbits immunized with a synthetic peptide corresponding to the center region of the Human cubilin / CUBN, and purified by antigen affinity chromatography.

Formulation

0.2 µm filtered solution in PBS

Storage

This antibody can be stored at 2°C-8°C for one month without detectable loss of activity. Antibody products are stable for twelve months from date of receipt when stored at -20°C to -80°C.

Preservative-Free.

Sodium azide is recommended to avoid contamination (final concentration 0.05%-0.1%). It is toxic to cells and should be disposed of properly. Avoid repeated freeze-thaw cycles.

Clonality

Polyclonal

Ig Type

Rabbit IgG

Applications

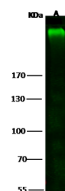
WB, IHC-P

Dilutions

WB: 5-20 µg/ml

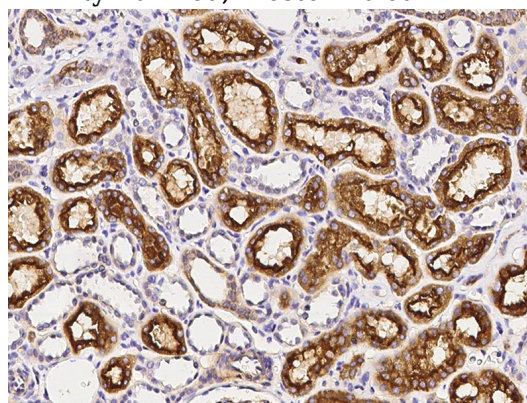
IHC-P: 0.1-2 µg/mL

Validations



| Items | Lanes | A |
|---------------------------|-------|--|
| Sample | | Rat kidney tissue lysate |
| Sample Volume (µg/lane) | | 30 |
| Gel | | 7.5% SDS-PAGE reducing gel |
| Recommended Concentration | | 5-20 µg/ml |
| Secondary Antibody | | Dylight 800 labeled Antibody To Rabbit IgG (H+L), at 1:5000 dilution. Developed using Odyssey imaging system. |
| Explanation | | Predicted band size : 399 kDa Observed band size : 399 kDa |

cubilin / CUBN Antibody, Rabbit PAb, Antigen Affinity Purified, Western blot



cubilin / CUBN Antibody, Rabbit PAb, Antigen Affinity Purified, Immunohistochemistry