

## Product name

GTDC1 antibody

IHC: 1:20-1:200

IF: 1:10-1:100

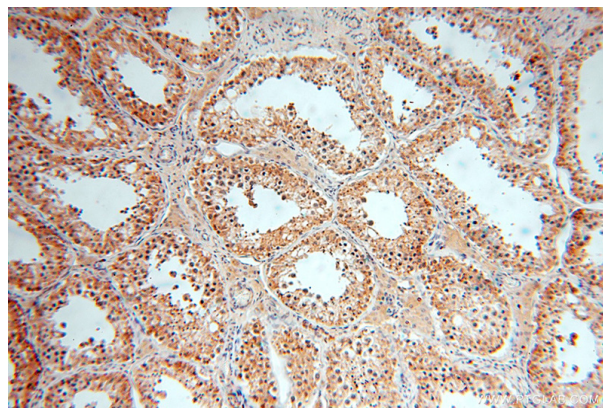
## Specificity

Human, Mouse, Rat; other species not tested.

## Validations

## Antibody description

GTDC1 Rabbit Polyclonal antibody. Positive WB detected in Transfected HEK-293 cells. Positive IHC detected in human testis tissue, human kidney tissue, human liver tissue, human ovary tissue, human spleen tissue. Positive IF detected in HepG2 cells.



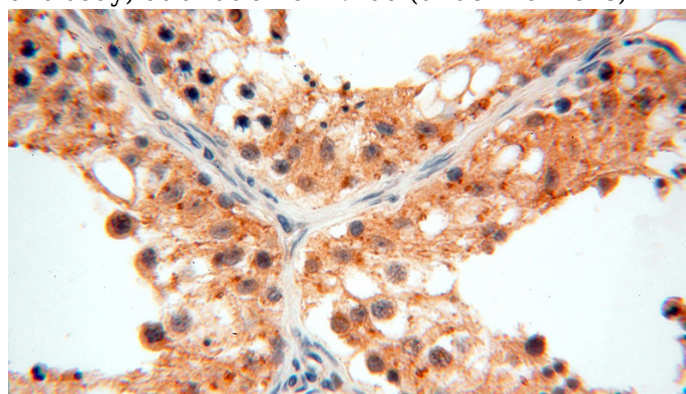
## Preparation

This antibody was obtained by immunization of GTDC1 recombinant protein (Accession Number: NM\_001284235). Purification method: Antigen affinity purified.

Immunohistochemical of paraffin-embedded human testis using Catalog No:111226(GTDC1 antibody) at dilution of 1:100 (under 10x lens)

## Formulation

PBS with 0.02% sodium azide and 50% glycerol pH 7.3.



## Storage

Store at -20°C. DO NOT ALIQUOT

Immunohistochemical of paraffin-embedded human testis using Catalog No:111226(GTDC1 antibody) at dilution of 1:100 (under 40x lens)

## Clonality

Polyclonal

## Ig Type

Rabbit IgG

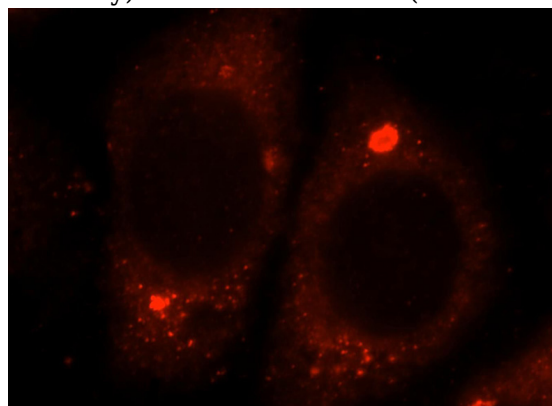
## Applications

ELISA, IHC, IF, WB

## Dilutions

Recommended Dilution:

WB: 1:200-1:2000



Immunofluorescent analysis of HepG2 cells, using UGT2B7 antibody Catalog No:111226 at 1:25

# GTDC1 antibody

Catalog Number: 111226

dilution and Rhodamine-labeled goat anti-rabbit IgG (red).

Transfected HEK-293 cells were subjected to SDS PAGE followed by western blot with Catalog No:111226(GTDC1 Antibody) at dilution of 1:500

