

Anti-ZIP Kinase Rabbit antibody



Catalog Number: 167926

Product name

Anti-ZIP Kinase Rabbit antibody

Specificity

Human

Antibody description

ZIP Kinase Rabbit monoclonal antibody

Preparation

Antigen: A synthetic peptide of human ZIP Kinase

Formulation

50nM Tris-Glycine(pH 7.4), 0.15M NaCl,
40%Glycerol, 0.01% sodium azide and 0.05% BSA

Storage

Store at 4°C short term. Store at -20°C long term.
Avoid freeze / thaw cycle.

Clonality

Monoclonal

Ig Type

Rabbit IgG

Applications

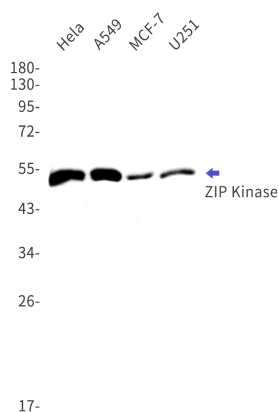
WB, FC

Dilutions

WB: 1/1000

FC: 1/20

Validations



Western blot detection of ZIP Kinase in HeLa,A549,MCF-7,U251 cell lysates using ZIP Kinase Rabbit mAb(1:1000 diluted).Predicted band size:53kDa.Observed band size:53kDa.