

TDP-43 (C-terminal) antibody



Catalog Number: 115926

Product name

TDP-43 (C-terminal) antibody

Specificity

Human, Mouse, Rat; other species not tested.

Antibody description

TDP-43 (C-terminal) Rabbit Polyclonal antibody. Positive IP detected in HeLa cells, mouse brain tissue. Positive WB detected in HeLa cells, A2780 cells, A549 cells, C6 cells, human heart tissue, human placenta tissue, K-562 cells, mouse heart tissue, mouse pancreas tissue. Positive IF detected in A549 cells, HeLa cells. Positive IHC detected in human lung cancer tissue, human gliomas tissue, mouse brain tissue, mouse pancreas tissue. Observed molecular weight by Western-blot: 43-45 kDa, 35 kDa

Preparation

This antibody was obtained by immunization of TDP-43 (C-terminal) recombinant protein (Accession Number: BC001487). Purification method: Antigen affinity purified.

Formulation

PBS with 0.1% sodium azide and 50% glycerol pH 7.3.

Storage

Store at -20°C. DO NOT ALIQUOT

Clonality

Polyclonal

Ig Type

Rabbit IgG

Applications

ELISA, IHC, IF, IP, WB

Dilutions

Recommended Dilution:

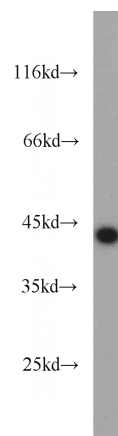
WB: 1:500-1:5000

IP: 1:500-1:5000

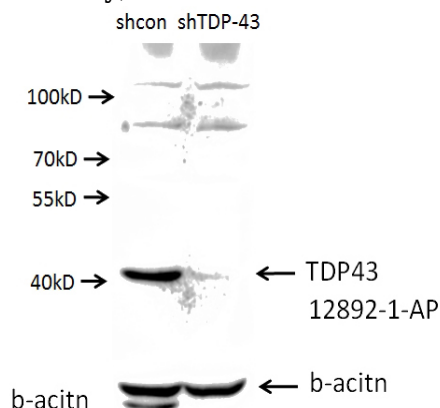
IHC: 1:20-1:200

IF: 1:20-1:200

Validations



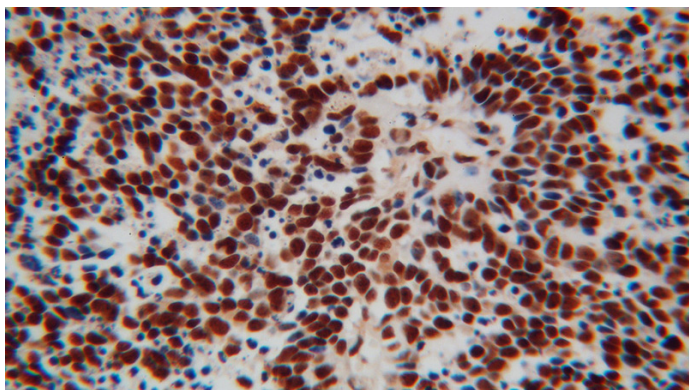
HeLa cells were subjected to SDS PAGE followed by western blot with Catalog No:115926(TARDBP antibody) at dilution of 1:1000



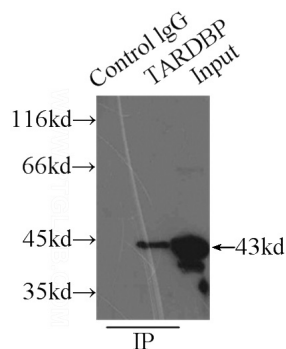
A549 cells (shcontrol and shRNA of TDP43) were subjected to SDS PAGE followed by western blot with Catalog No:115926 (TDP43 antibody) at dilution of 1:1000. (Data provided by Angran Biotech (www.miRNAlab.com)).

TDP-43 (C-terminal) antibody

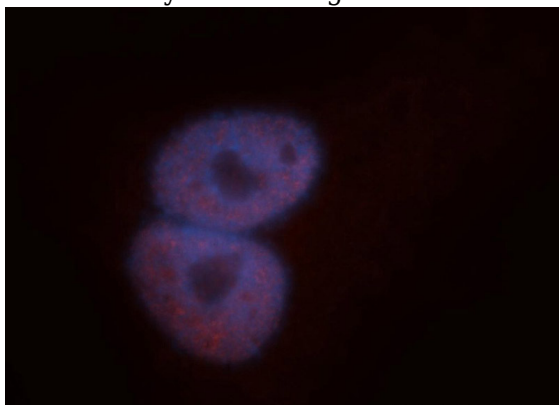
Catalog Number: 115926



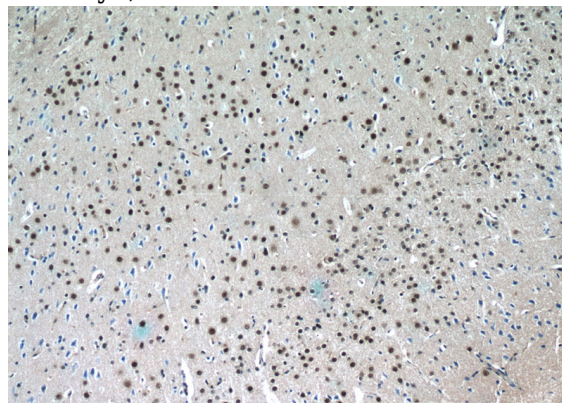
Immunohistochemical of paraffin-embedded human lung cancer using Catalog No:115926(TARDBP antibody) at dilution of 1:100 (under 40x lens)



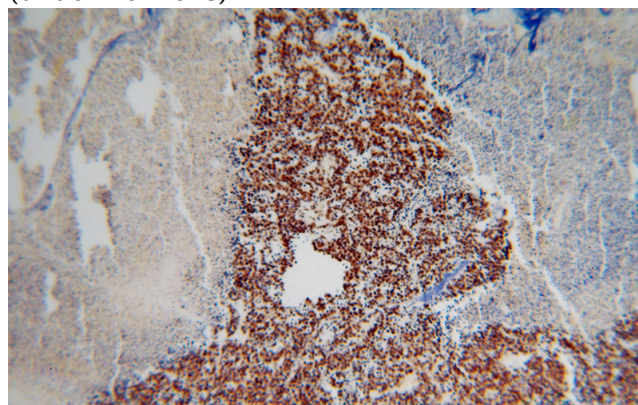
IP Result of anti-TARDBP (IP:Catalog No:115926, 3ug; Detection:Catalog No:115926 1:1000) with HeLa cells lysate 3000ug.



Immunofluorescent analysis of A549 cells, using TARDBP antibody Catalog No:115926 at 1:50 dilution and Rhodamine-labeled goat anti-rabbit IgG (red). Blue pseudocolor = DAPI (fluorescent DNA dye).



Immunohistochemistry of paraffin-embedded mouse brain tissue slide using Catalog No:115926(TDP-43 Antibody) at dilution of 1:50 (under 10x lens)



Immunohistochemical of paraffin-embedded human lung cancer using Catalog No:115926(TARDBP antibody) at dilution of 1:100 (under 10x lens)