

# SERPINA10 antibody



Catalog Number: 107526

## Product name

SERPINA10 antibody

IHC: 1:20-1:200

IF: 1:20-1:200

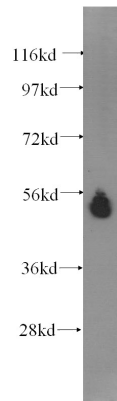
## Specificity

Human; other species not tested.

## Validations

## Antibody description

SERPINA10 Mouse Monoclonal antibody. Positive WB detected in Hepg2 cell, human liver tissue, human placenta tissue. Positive IF detected in HepG2 cells. Positive IHC detected in human liver tissue. Observed molecular weight by Western-blot: 72 kDa



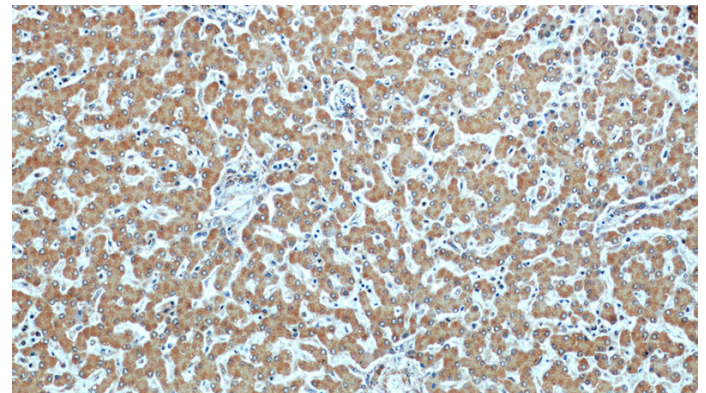
## Preparation

This antibody was obtained by immunization of SERPINA10 recombinant protein (Accession Number: NM\_001100607). Purification method: Protein A purified.

HepG2 cells were subjected to SDS PAGE followed by western blot with Catalog No:107526(SERPINA10 antibody) at dilution of 1:300

## Formulation

PBS with 0.1% sodium azide and 50% glycerol pH 7.3.



## Storage

Store at -20°C. DO NOT ALIQUOT

## Clonality

Monoclonal

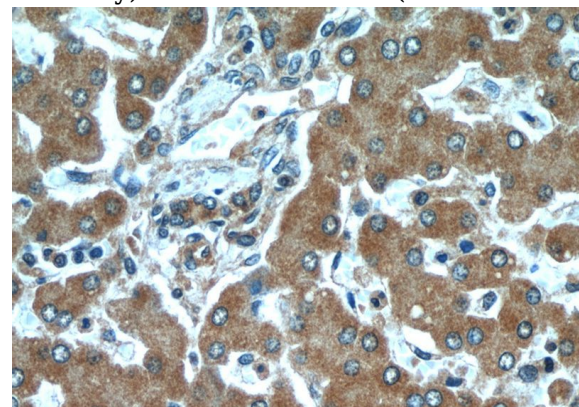
Immunohistochemical of paraffin-embedded human liver using Catalog No:107526(SERPINA10 antibody) at dilution of 1:50 (under 10x lens)

## Ig Type

Mouse IgG2a

## Applications

ELISA, WB, IHC, IF



## Dilutions

Recommended Dilution:

WB: 1:200-1:1000

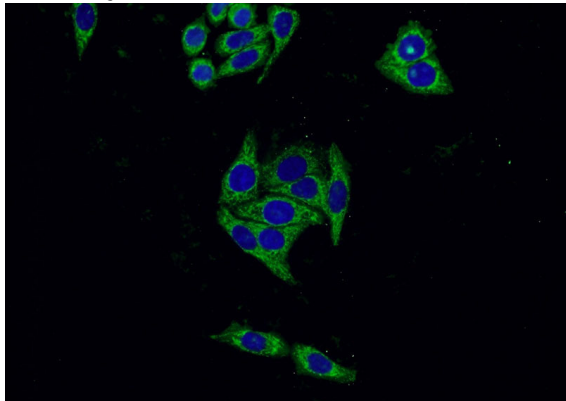
Immunohistochemical of paraffin-embedded

# SERPINA10 antibody

Catalog Number: 107526

---

human liver using Catalog No:107526(SERPINA10 antibody) at dilution of 1:50 (under 40x lens)



Immunofluorescent analysis of HepG2 cells using Catalog No:107526(SERPINA10 Antibody) at dilution of 1:50 and Alexa Fluor 488-conjugated AffiniPure Goat Anti-Mouse IgG(H+L)