

# TIM22 antibody



Catalog Number: 116126

## Product name

TIM22 antibody

## Specificity

Human, Mouse, Rat; other species not tested.

## Antibody description

TIM22 Rabbit Polyclonal antibody. Positive IHC detected in human liver tissue, human lung tissue. Positive IP detected in mouse liver tissue. Positive WB detected in HepG2 cells, human liver tissue, human lung tissue, human ovary cancer, human stomach tissue, human testis tissue, mouse liver tissue, mouse ovary tissue, mouse testis tissue. Observed molecular weight by Western-blot: 20 kDa

## Preparation

This antibody was obtained by immunization of TIM22 recombinant protein (Accession Number: NM\_013337). Purification method: Antigen affinity purified.

## Formulation

PBS with 0.1% sodium azide and 50% glycerol pH 7.3.

## Storage

Store at -20°C. DO NOT ALIQUOT

## Clonality

Polyclonal

## Ig Type

Rabbit IgG

## Applications

ELISA, WB, IHC, IP

## Dilutions

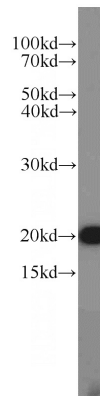
Recommended Dilution:

WB: 1:500-1:5000

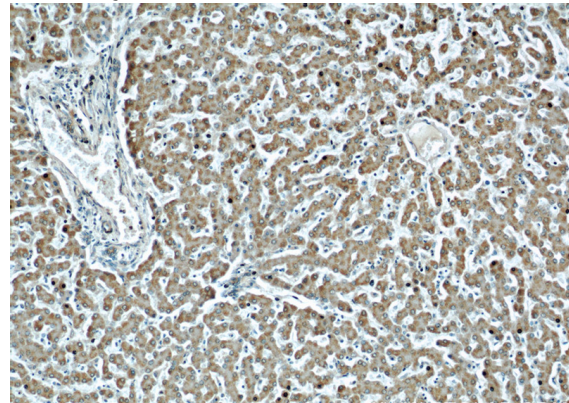
IP: 1:500-1:5000

IHC: 1:20-1:200

## Validations



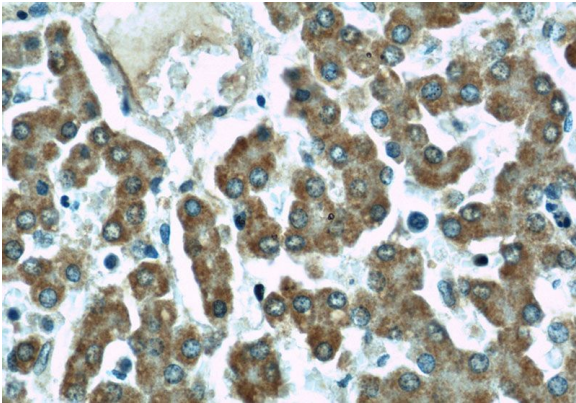
HepG2 cells were subjected to SDS PAGE followed by western blot with Catalog No:116126(TIMM22 antibody) at dilution of 1:1000



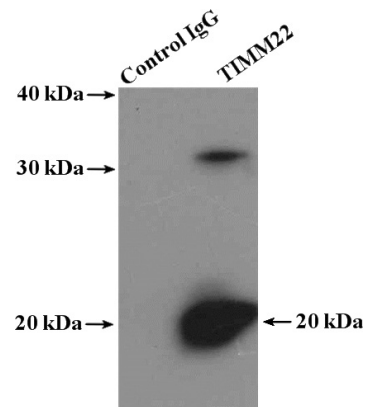
Immunohistochemical of paraffin-embedded human liver using Catalog No:116126(TIMM22 antibody) at dilution of 1:50 (under 10x lens)

# TIM22 antibody

Catalog Number: 116126



Immunohistochemical of paraffin-embedded human liver using Catalog No:116126(TIMM22 antibody) at dilution of 1:50 (under 40x lens)



IP Result of anti-TIMM22 (IP:Catalog No:116126, 4ug; Detection:Catalog No:116126 1:1000) with mouse liver tissue lysate 4000ug.