

Rat EPHA3/Eph Receptor A3 (Fc Tag) recombinant protein



Catalog Number: 501126

General Information

Protein Construction

A DNA sequence encoding the rat EPHA3 (EDL75897.1) (Met1-His541) was expressed with the Fc region of human IgG1 at the C-terminus.

Organism

Rat

Expression Host

Human Cells

QC Testing

Activity

Measured by its binding ability in a functional ELISA.

Immobilized ratEFNA5-His (Cat:503443) at 10 µg/ml (100 µl/well) can bind rat EPHA3-Fc, The EC₅₀ of rat EPHA3-Fc is 12.1-28.4 ng/ml.

Purity

> 95 % as determined by SDS-PAGE

Endotoxin

< 1.0 EU per µg of the protein as determined by the LAL method

Stability

Samples are stable for up to twelve months from date of receipt at -70°C

Predicted N terminal

Glu 21

Molecular Mass

The recombinant rat EPHA3/Fc is a disulfide-linked homodimer. The reduced monomer comprises 762 amino acids and has a predicted molecular mass of 85.8 kDa. The apparent molecular mass of the protein is approximately 103 kDa in SDS-PAGE under reducing conditions.

Formulation

Lyophilized from sterile PBS, pH 7.4.

1. 5 % trehalose and mannitol are added as protectants before lyophilization.

2. Please contact us for any concerns or special requirements.

Usage Guide

Storage

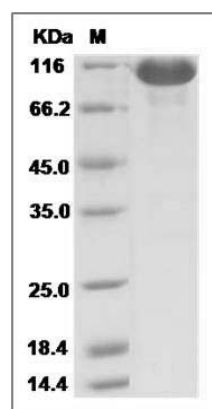
Store it under sterile conditions at -20°C to -80°C.

It is recommended that the protein be aliquoted for optimal storage. Avoid repeated freeze-thaw cycles.

Reconstitution

Adding sterile water, prepare a stock solution of 0.25 mg/ml. Concentration is measured by UV-Vis.

SDS-PAGE



Rat EphA3 Protein (Fc Tag) SDS-PAGE