

# DVL3 antibody

Catalog Number: 110126

## Product name

DVL3 antibody

IP: 1:200-1:2000

IF: 1:20-1:200

## Specificity

Human, Mouse, Rat; other species not tested.

## Antibody description

DVL3 Rabbit Polyclonal antibody. Positive WB detected in A431 cells, A549 cells, MCF7 cells, Raji cells. Positive IP detected in Raji cells. Positive IF detected in Hela cells. Observed molecular weight by Western-blot: 78 kDa

## Preparation

This antibody was obtained by immunization of DVL3 recombinant protein (Accession Number: NM\_004423). Purification method: Antigen affinity purified.

## Formulation

PBS with 0.02% sodium azide and 50% glycerol pH 7.3.

## Storage

Store at -20°C. DO NOT ALIQUOT

## Clonality

Polyclonal

## Ig Type

Rabbit IgG

## Applications

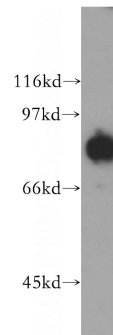
ELISA, WB, IF, IP

## Dilutions

Recommended Dilution:

WB: 1:200-1:1000

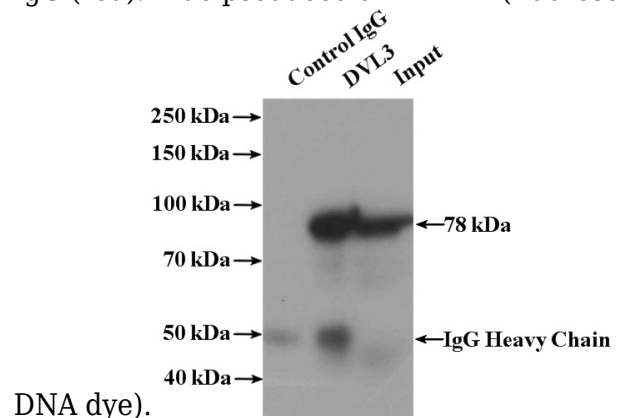
## Validations



A431 cells were subjected to SDS PAGE followed by western blot with Catalog No:110126(DVL3 antibody) at dilution of 1:300



Immunofluorescent analysis of Hela cells, using SFRS17A antibody Catalog No:110126 at 1:50 dilution and Rhodamine-labeled goat anti-rabbit IgG (red). Blue pseudocolor = DAPI (fluorescent



# DVL3 antibody



Catalog Number: 110126

---

IP Result of anti-DVL3 (IP:Catalog No:110126,

4ug; Detection:Catalog No:110126 1:500) with  
Raji cells lysate 1440ug.