

Anti-C19ORF10 / SF20 antibody



Catalog Number: 100126

Product name

Anti-C19ORF10 / SF20 antibody

Immunogen

[Human C19ORF10 / SF20 \(His Tag\) recombinant protein](#)

Specificity

Human C19ORF10 / SF20

Antibody description

Rabbit polyclonal to C19ORF10 / SF20

Preparation

Produced in rabbits immunized with purified, recombinant Human C19ORF10 / SF20 (rh C19ORF10 / SF20; NP_061980.1; Met1-Leu173). C19ORF10 / SF20 specific IgG was purified by Human C19ORF10 / SF20 affinity chromatography.

Formulation

0.2 µm filtered solution in PBS

Storage

This antibody can be stored at 2°C-8°C for one month without detectable loss of activity. Antibody products are stable for twelve months from date of receipt when stored at -20°C to -80°C.

Preservative-Free.

Sodium azide is recommended to avoid contamination (final concentration 0.05%-0.1%). It is toxic to cells and should be disposed of properly. Avoid repeated freeze-thaw cycles.

Clonality

Polyclonal

Ig Type

Rabbit IgG

Applications

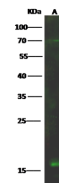
WB, IP

Dilutions

WB: 10-20 µg/ml

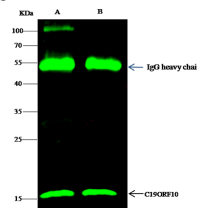
IP: 0.5-2 µg/mg of lysate

Validations



Items	Lanes	A
Sample (whole cell lysate)		MCF7
Sample Volume (µg/lane)		30
Gel		13% SDS-PAGE reducing gel
Recommended Concentration		10-20 µg/ml
Secondary Antibody		Dylight 800-labeled Antibody to Rabbit IgG (H+L), at 1:5000 dilution.
Developed using Odyssey imaging system.		
Explanation		Predicted band size : 19 kDa Observed band size : 16 kDa Additional bands at : 70 kDa (We are unsure as to the identity of these extra bands.)

C19ORF10 / SF20 Antibody, Rabbit PAb, Antigen Affinity Purified, Western blot



Items	Lanes	A	B
Sample (whole cell lysate)		Jurkat	MCF7
Sample quantity			0.5 mg
IP antibody quantity			4 µg
Immunoprecipitation beads Protein G			60 µg
Gel			13% SDS-PAGE reducing gel
Primary antibody		C19ORF10 antibody at 10 µg/ml	
Secondary antibody		Dylight 800-labeled antibody to rabbit IgG (H+L), at 1:5000 dilution	

C19ORF10 / SF20 Antibody, Rabbit PAb, Antigen Affinity Purified, Immunoprecipitation