

# DDX28 antibody



Catalog Number: 109826

## Product name

DDX28 antibody

## Specificity

human, mouse, rat; other species not tested.

## Antibody description

DDX28 Rabbit Polyclonal antibody. Positive WB detected in A549 cells, HEK-293 cells, human brain tissue, human colon tissue. Positive IHC detected in human prostate cancer. Observed molecular weight by Western-blot: 60kd

## Preparation

This antibody was obtained by immunization of DDX28 recombinant protein (Accession Number: NM\_018380). Purification method: Antigen affinity purified.

## Formulation

PBS with 0.1% sodium azide and 50% glycerol pH 7.3.

## Storage

Store at -20°C. DO NOT ALIQUOT

## Clonality

Polyclonal

## Ig Type

Rabbit IgG

## Applications

ELISA, WB, IHC

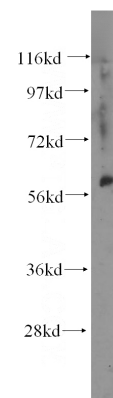
## Dilutions

Recommended Dilution:

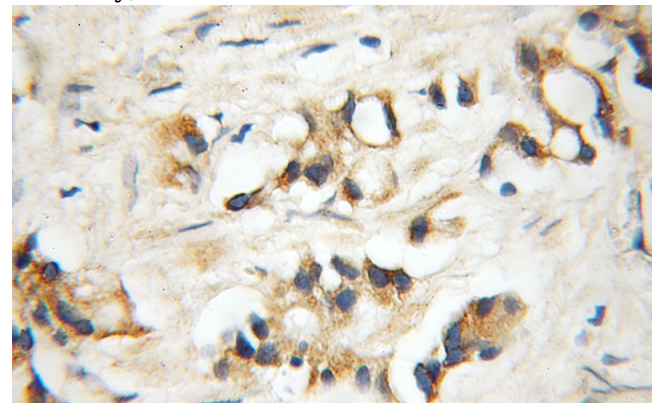
WB: 1:200-1:2000

IHC: 1:20-1:200

## Validations



A549 cells were subjected to SDS PAGE followed by western blot with Catalog No:109826(DDX28 antibody) at dilution of 1:300



Immunohistochemical of paraffin-embedded human prostate cancer using Catalog No:109826(DDX28 antibody) at dilution of 1:50 (under 10x lens)