

RPS10 antibody

Catalog Number: 114826

Product name

RPS10 antibody

WB: 1:200-1:2000

IHC: 1:20-1:200

Immunogen

[Human RPS10 Recombinant protein \(GST tag\)](#)

Specificity

human, mouse, rat; other species not tested.

Antibody description

RPS10 Rabbit Polyclonal antibody. Positive WB detected in Raji cells. Positive IHC detected in human lymphoma. Observed molecular weight by Western-blot: 19kd

Preparation

This antibody was obtained by immunization of RPS10 recombinant protein (Accession Number: NM_001203245). Purification method: Antigen affinity purified.

Formulation

PBS with 0.02% sodium azide and 50% glycerol pH 7.3.

Storage

Store at -20°C. DO NOT ALIQUOT

Clonality

Polyclonal

Ig Type

Rabbit IgG

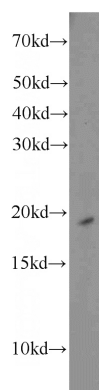
Applications

ELISA, WB, IHC

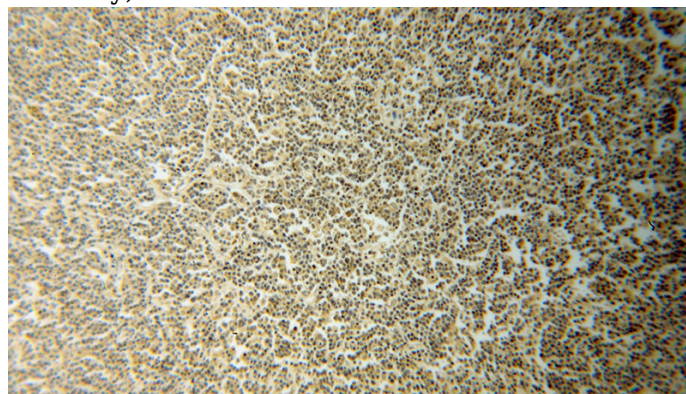
Dilutions

Recommended Dilution:

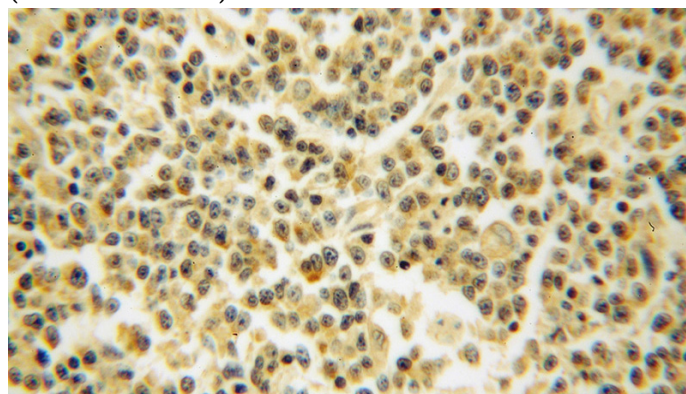
Validations



Raji cells were subjected to SDS PAGE followed by western blot with Catalog No:114826(RPS10 antibody) at dilution of 1:1000



Immunohistochemical of paraffin-embedded human lymphoma using Catalog No:114826(RPS10 antibody) at dilution of 1:100 (under 10x lens)



Immunohistochemical of paraffin-embedded

RPS10 antibody



Catalog Number: 114826

human lymphoma using Catalog

No:114826(RPS10 antibody) at dilution of 1:100
(under 40x lens)