

# MRPL37 antibody



Catalog Number: 112826

## Product name

MRPL37 antibody

## Specificity

Human, Mouse, Rat; other species not tested.

## Antibody description

MRPL37 Rabbit Polyclonal antibody. Positive IHC detected in human lymphoma tissue. Positive WB detected in mouse liver tissue, human heart tissue, mouse ovary tissue, mouse uterus tissue. Observed molecular weight by Western-blot: 48kd

## Preparation

This antibody was obtained by immunization of MRPL37 recombinant protein (Accession Number: NM\_016491). Purification method: Antigen affinity purified.

## Formulation

PBS with 0.02% sodium azide and 50% glycerol pH 7.3.

## Storage

Store at -20°C. DO NOT ALIQUOT

## Clonality

Polyclonal

## Ig Type

Rabbit IgG

## Applications

ELISA, WB, IHC

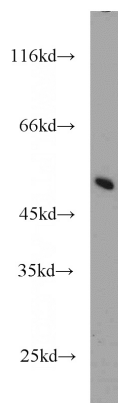
## Dilutions

Recommended Dilution:

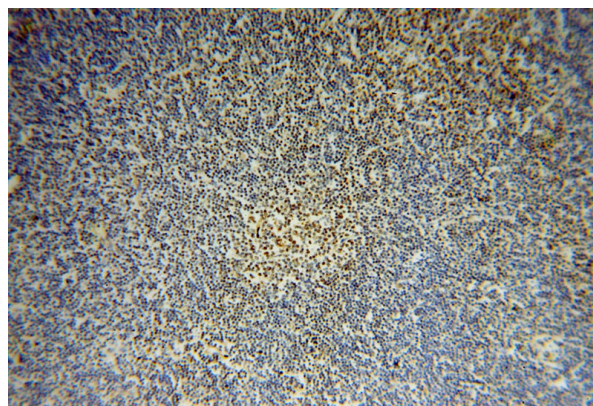
WB: 1:200-1:2000

IHC: 1:20-1:200

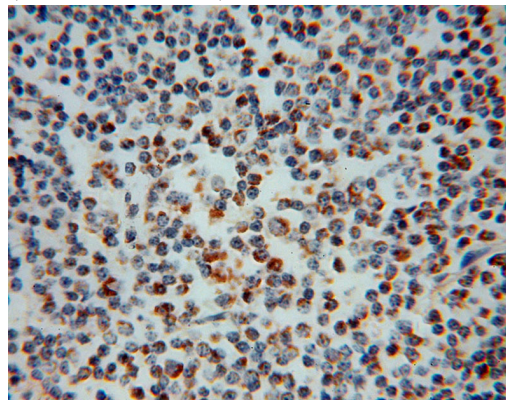
## Validations



mouse liver tissue were subjected to SDS PAGE followed by western blot with Catalog No:112826(MRPL37 antibody) at dilution of 1:1000



Immunohistochemical of paraffin-embedded human lymphoma using Catalog No:112826(MRPL37 antibody) at dilution of 1:50 (under 10x lens)



Immunohistochemical of paraffin-embedded

# MRPL37 antibody



Catalog Number: 112826

---

human lymphoma using Catalog

No:112826(MRPL37 antibody) at dilution of 1:50  
(under 40x lens)