

# Rhesus ACE2 / Angiotensin-Converting Enzyme 2 (Fc Tag) recombinant protein



Catalog Number: 500826

## General Information

### Protein Construction

A DNA sequence encoding the rhesus ACE2 (ACI04564.1) (Met1-Val739) was expressed with the Fc region of human IgG1 at the C-terminus.

### Organism

Rhesus

### Expression Host

Human Cells

## QC Testing

### Activity

Measured by its ability to cleave a fluorogenic peptide substrate, Mca-YVADAPK (Dnp)-OH (Catalog # ES007).

The specific activity is >250 pmol/min/μg.

### Purity

(92.8±4.3) % as determined by SDS-PAGE

### Endotoxin

< 1.0 EU per μg of the protein as determined by the LAL method

### Stability

Samples are stable for up to twelve months from date of receipt at -70°C

### Predicted N terminal

Gln 18

## Molecular Mass

The recombinant rhesus ACE2 is comprises 963 amino acids and has a calculated molecular mass of 110.7

## Formulation

Lyophilized from sterile PBS, pH 7.4.

1. 5 % trehalose and mannitol are added as protectants before lyophilization.

2. Please contact us for any concerns or special requirements.

## Usage Guide

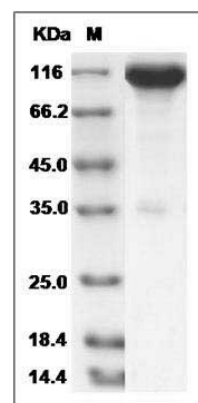
### Storage

Store it under sterile conditions at -20°C to -80°C. It is recommended that the protein be aliquoted for optimal storage. Avoid repeated freeze-thaw cycles.

### Reconstitution

Adding sterile water, prepare a stock solution of 0.25 mg/ml. Concentration is measured by UV-Vis.

## SDS-PAGE



Cynomolgus ACE2 / Angiotensin-Converting Enzyme 2 Protein (Fc Tag) SDS-PAGE