

ORM2 antibody

Catalog Number: 113426

Product name

ORM2 antibody

IP: 1:200-1:2000

IHC: 1:20-1:200

Specificity

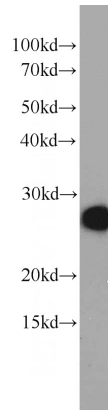
Human, Mouse; other species not tested.

IF: 1:10-1:100

Antibody description

ORM2 Rabbit Polyclonal antibody. Positive IP detected in L02 cells. Positive WB detected in A549 cells, L02 cells, mouse liver tissue. Positive IHC detected in human prostate cancer tissue. Positive IF detected in Hela cells. Observed molecular weight by Western-blot: 24-28 kDa

Validations



Preparation

This antibody was obtained by immunization of ORM2 recombinant protein (Accession Number: NM_000608). Purification method: Antigen affinity purified.

A549 cells were subjected to SDS PAGE followed by western blot with Catalog No:113426(ORM2 antibody) at dilution of 1:800

Formulation

PBS with 0.1% sodium azide and 50% glycerol pH 7.3.

Storage

Store at -20°C. DO NOT ALIQUOT

Clonality

Polyclonal

Ig Type

Rabbit IgG

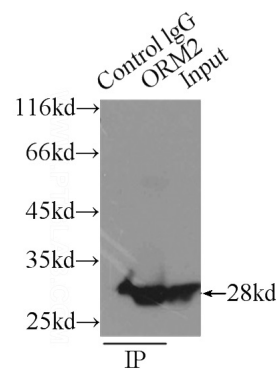
Applications

ELISA, WB, IHC, IF, IP

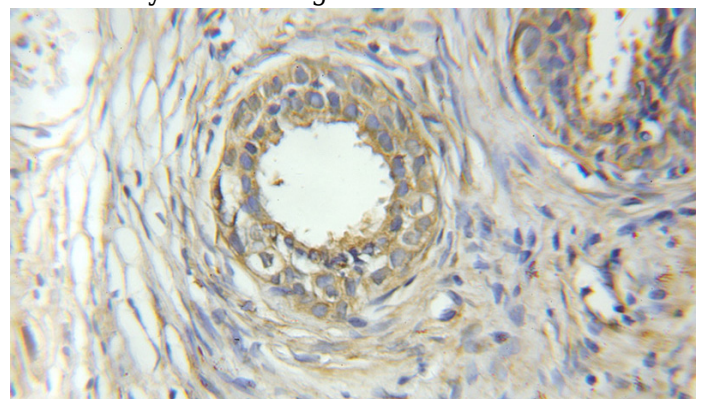
Dilutions

Recommended Dilution:

WB: 1:500-1:5000



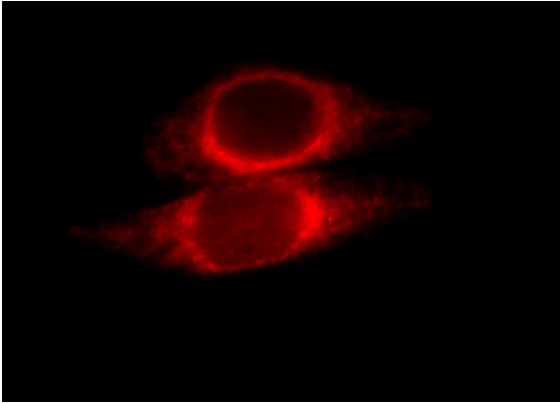
IP Result of anti-ORM2 (IP:Catalog No:113426, 3ug; Detection:Catalog No:113426 1:800) with L02 cells lysate 2500ug.



ORM2 antibody

Catalog Number: 113426

Immunohistochemical of paraffin-embedded human prostate cancer using Catalog No:113426(ORM2 antibody) at dilution of 1:50 (under 10x lens)



Immunofluorescent analysis of Hela cells, using ORM2 antibody Catalog No:113426 at 1:25 dilution and Rhodamine-labeled goat anti-rabbit IgG (red).