

Ezrin antibody

Catalog Number: 110426

Product name

Ezrin antibody

IHC: 1:100-1:600

IF: 1:20-1:200

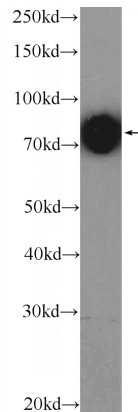
Specificity

Human, Mouse; other species not tested.

Validations

Antibody description

Ezrin Rabbit Polyclonal antibody. Positive WB detected in HeLa cells. Positive IF detected in HeLa cells. Positive IHC detected in mouse stomach tissue, human small intestine tissue. Observed molecular weight by Western-blot: 70-75 kDa



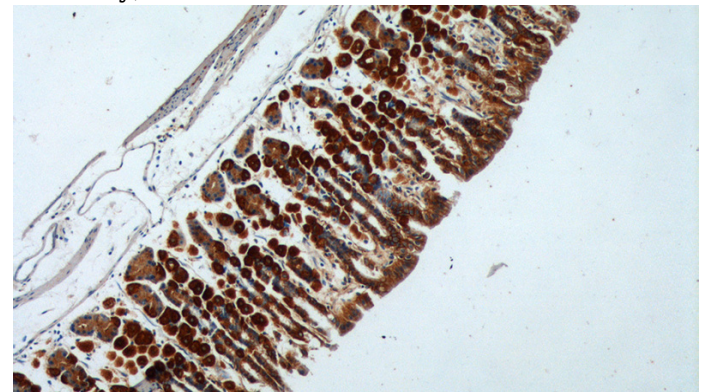
Preparation

This antibody was obtained by immunization of Ezrin recombinant protein (Accession Number: NM_003379). Purification method: Antigen affinity purified.

HeLa cells were subjected to SDS PAGE followed by western blot with Catalog No:110426(Ezrin Antibody) at dilution of 1:5000

Formulation

PBS with 0.1% sodium azide and 50% glycerol pH 7.3.



Storage

Store at -20°C. DO NOT ALIQUOT

Clonality

Polyclonal

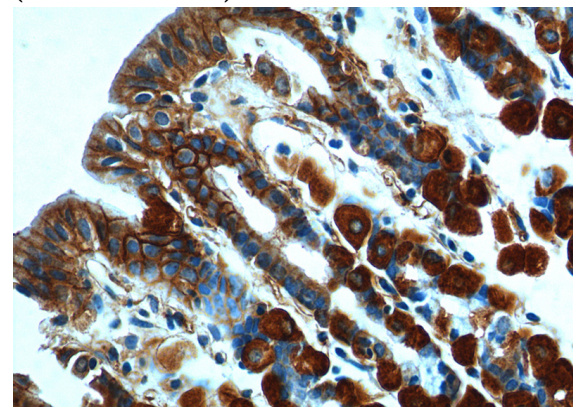
Immunohistochemistry of paraffin-embedded mouse stomach tissue slide using Catalog No:110426(Ezrin Antibody) at dilution of 1:200 (under 10x lens).

Ig Type

Rabbit IgG

Applications

ELISA, WB, IF, IHC



Dilutions

Recommended Dilution:

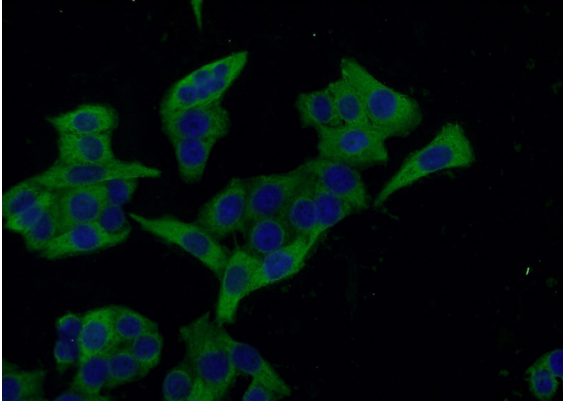
WB: 1:2000-1:20000

Immunohistochemistry of paraffin-embedded

Ezrin antibody

Catalog Number: 110426

mouse stomach tissue slide using Catalog No:110426(Ezrin Antibody) at dilution of 1:200 (under 40x lens).



Immunofluorescent analysis of HeLa cells using Catalog No:110426(Ezrin Antibody) at dilution of 1:50 and Alexa Fluor 488-conjugated AffiniPure Goat Anti-Rabbit IgG(H+L)