

# Anti-PD-L2 Rabbit antibody



Catalog Number: 169026

## Product name

Anti-PD-L2 Rabbit antibody

## Specificity

Human, Mouse, Rat

## Antibody description

PD-L2 Rabbit monoclonal antibody

## Preparation

Antigen: A synthetic peptide of human PD-L2

## Formulation

Supplied in 50nM Tris-Glycine(pH 7.4), 0.15M NaCl, 40%Glycerol, 0.01% sodium azide and 0.05% BSA.

## Storage

Store at 4°C short term. Aliquot and store at -20°C long term. Avoid freeze / thaw cycle.

## Clonality

Monoclonal

## Ig Type

Rabbit IgG

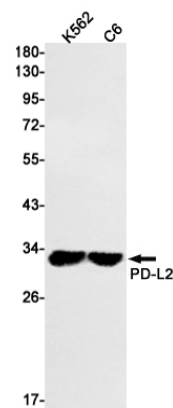
## Applications

WB

## Dilutions

1:1000-1:5000

## Validations



Western blot detection of PD-L2 in K562,C6 cell lysates using PD-L2 Rabbit mAb(1:1000 diluted).Predicted band size:31kDa.Observed band size:31kDa.