

# APOBEC3C antibody



Catalog Number: 108026

## Product name

APOBEC3C antibody

IHC: 1:10-1:100

IF: 1:50-1:500

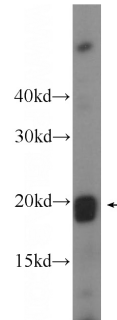
## Specificity

Human; other species not tested.

## Validations

## Antibody description

APOBEC3C Rabbit Polyclonal antibody. Positive WB detected in Human peripheral blood leukocyte cells, K-562 cells. Positive IHC detected in human ovary tumor tissue. Positive IF detected in SKOV-3 cells. Observed molecular weight by Western-blot: 23 kDa



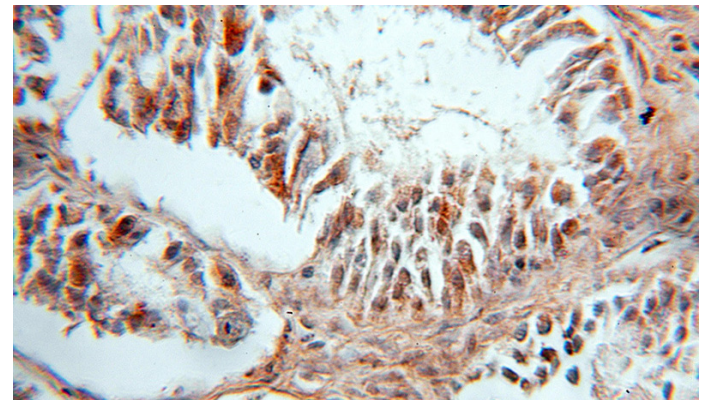
## Preparation

This antibody was obtained by immunization of APOBEC3C recombinant protein (Accession Number: NM\_014508). Purification method: Antigen affinity purified.

Human peripheral blood leukocyte cells were subjected to SDS PAGE followed by western blot with Catalog No:108026(APOBEC3C Antibody) at dilution of 1:1000

## Formulation

PBS with 0.1% sodium azide and 50% glycerol pH 7.3.



## Storage

Store at -20°C. DO NOT ALIQUOT

## Clonality

Polyclonal

## Ig Type

Rabbit IgG

## Applications

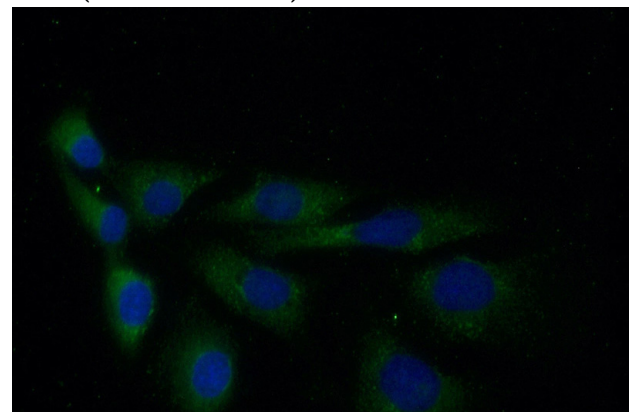
ELISA, IHC, WB, IF

## Dilutions

Recommended Dilution:

WB: 1:500-1:5000

Immunohistochemical of paraffin-embedded human ovary tumor using Catalog No:108026(APOBEC3C antibody) at dilution of 1:10 (under 10x lens)



# APOBEC3C antibody



Catalog Number: 108026

---

Immunofluorescent analysis of (-20oc Ethanol)  
fixed SKOV-3 cells using Catalog  
No:108026(APOBEC3C Antibody) at dilution of

1:50 and Alexa Fluor 488-congugated AffiniPure  
Goat Anti-Rabbit IgG(H+L)