

SDCCAG10 antibody



Catalog Number: 115026

Product name

SDCCAG10 antibody

IP: 1:200-1:2000

IF: 1:20-1:200

Specificity

Human, Mouse, Rat; other species not tested.

Antibody description

SDCCAG10 Rabbit Polyclonal antibody. Positive WB detected in HepG2 cells, HeLa cells, human colon tissue. Positive IP detected in HepG2 cells. Positive IF detected in HepG2 cells. Observed molecular weight by Western-blot: 54 kDa

Preparation

This antibody was obtained by immunization of SDCCAG10 recombinant protein (Accession Number: BC012117). Purification method: Antigen affinity purified.

Formulation

PBS with 0.02% sodium azide and 50% glycerol pH 7.3.

Storage

Store at -20°C. DO NOT ALIQUOT

Clonality

Polyclonal

Ig Type

Rabbit IgG

Applications

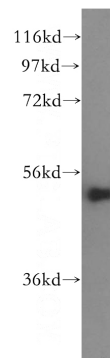
ELISA, WB, IF, IP

Dilutions

Recommended Dilution:

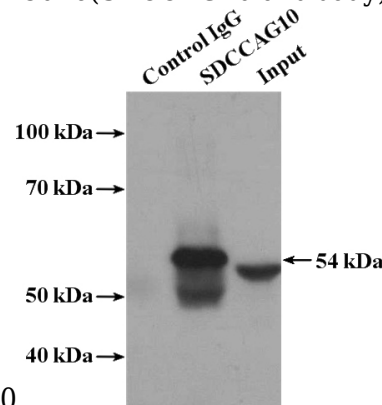
WB: 1:500-1:5000

Validations

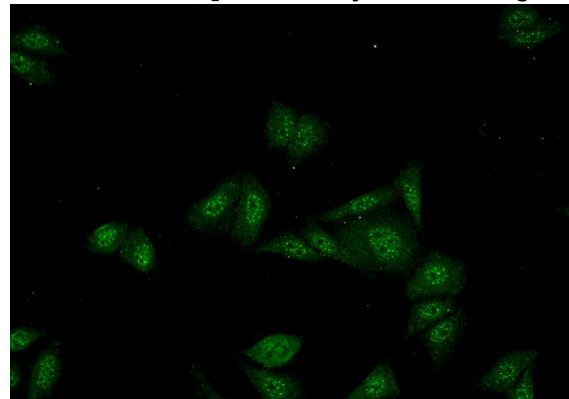


HepG2 cells were subjected to SDS PAGE followed by western blot with Catalog No:115026(SDCCAG10 antibody) at dilution of

1:500



IP Result of anti-SDCCAG10 (IP:Catalog No:115026, 4ug; Detection:Catalog No:115026 1:500) with HepG2 cells lysate 2400ug.



Immunofluorescent analysis of (-20oc Ethanol)

SDCCAG10 antibody



Catalog Number: 115026

fixed HepG2 cells using Catalog
No:115026(SDCCAG10 Antibody) at dilution of

1:50 and Alexa Fluor 488-conjugated AffiniPure
Goat Anti-Rabbit IgG(H+L)