

PIWIL2 Polyclonal Antibody



Catalog Number: 164716

Product name

PIWIL2 Polyclonal Antibody

Specificity

Mouse, Rat

Antibody description

Polyclonal antibody to PIWIL2

Preparation

Antigen: Recombinant protein of mouse PIWIL2

Formulation

PBS with 0.02% sodium azide, 50% glycerol, pH7.3.

Storage

Store at -20°C. Avoid freeze / thaw cycles.

Clonality

Polyclonal

Ig Type

Rabbit IgG

Applications

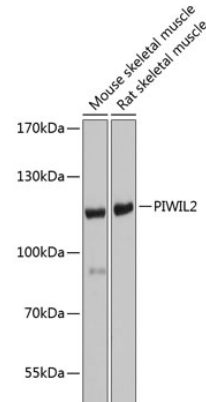
WB, IHC

Dilutions

WB 1:1000 - 1:3000

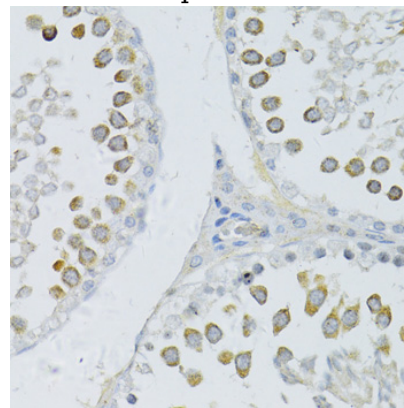
IHC 1:100 - 1:200

Validations



Western blot - PIWIL2 Polyclonal Antibody

Western blot analysis of extracts of various cell lines, using PIWIL2 antibody at 1:1000 dilution. Secondary antibody: HRP Goat Anti-Rabbit IgG (H+L) at 1:10000 dilution. Lysates/proteins: 25ug per lane. Blocking buffer: 3% nonfat dry milk in TBST. Detection: ECL Basic Kit. Exposure time: 5s.



Immunohistochemistry - PIWIL2 Polyclonal Antibody

Immunohistochemistry of paraffin-embedded rat testis using PIWIL2 antibody at dilution of 1:100 (40x lens).