

# ATP6V1G3 antibody



Catalog Number: 108316

## Product name

ATP6V1G3 antibody

IP: 1:200-1:2000

IHC: 1:20-1:200

## Specificity

Human, Mouse; other species not tested.

## Antibody description

ATP6V1G3 Rabbit Polyclonal antibody. Positive WB detected in HEK-293 cells, mouse kidney tissue. Positive IP detected in mouse kidney tissue. Positive IHC detected in human kidney tissue. Observed molecular weight by Western-blot: 14 kDa

## Preparation

This antibody was obtained by immunization of Peptide (Accession Number: NM\_133326). Purification method: Antigen affinity purified.

## Formulation

PBS with 0.02% sodium azide and 50% glycerol pH 7.3.

## Storage

Store at -20°C. DO NOT ALIQUOT

## Clonality

Polyclonal

## Ig Type

Rabbit IgG

## Applications

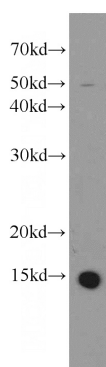
ELISA, WB, IHC, IP

## Dilutions

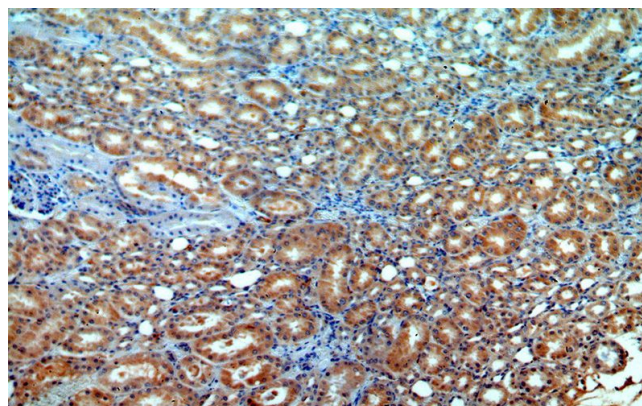
Recommended Dilution:

WB: 1:200-1:2000

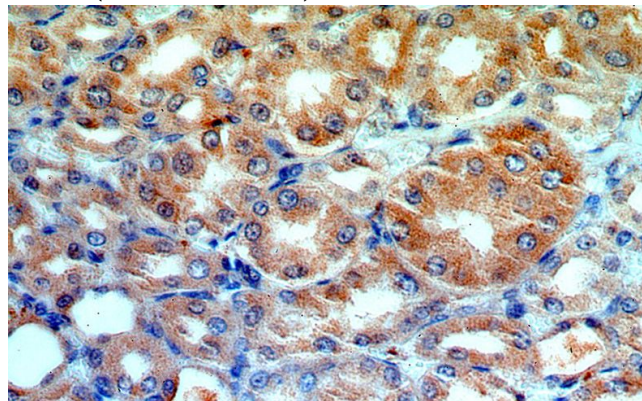
## Validations



HEK-293 cells were subjected to SDS PAGE followed by western blot with Catalog No:108316(ATP6V1G3 antibody) at dilution of 1:500



Immunohistochemical of paraffin-embedded human kidney using Catalog No:108316(ATP6V1G3 antibody) at dilution of 1:100 (under 10x lens)



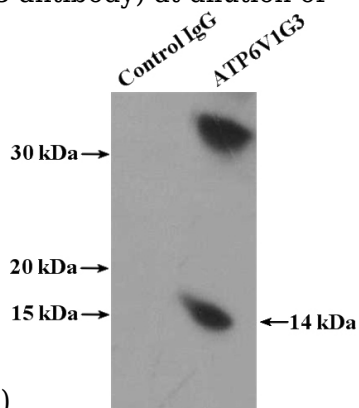
# ATP6V1G3 antibody

Catalog Number: 108316

---

Immunohistochemical of paraffin-embedded human kidney using Catalog No:108316(ATP6V1G3 antibody) at dilution of

IP Result of anti-ATP6V1G3 (IP:Catalog No:108316, 4ug; Detection:Catalog No:108316 1:800) with mouse kidney tissue lysate 4800ug.



1:100 (under 40x lens)