

CSTF1 antibody

Catalog Number: 109616

Product name

CSTF1 antibody

Specificity

Human, Mouse, Rat; other species not tested.

Antibody description

CSTF1 Rabbit Polyclonal antibody. Positive WB detected in HeLa cells, HEK-293 cells, HepG2 cells, K-562 cells, mouse brain tissue, mouse kidney tissue, NIH/3T3 cells. Positive IP detected in NIH/3T3 cells. Observed molecular weight by Western-blot: 50-58 kDa

Preparation

This antibody was obtained by immunization of CSTF1 recombinant protein (Accession Number: XM_011528600). Purification method: Antigen affinity purified.

Formulation

PBS with 0.1% sodium azide and 50% glycerol pH 7.3.

Storage

Store at -20°C. DO NOT ALIQUOT

Clonality

Polyclonal

Ig Type

Rabbit IgG

Applications

ELISA, WB, IP

Dilutions

Recommended Dilution:

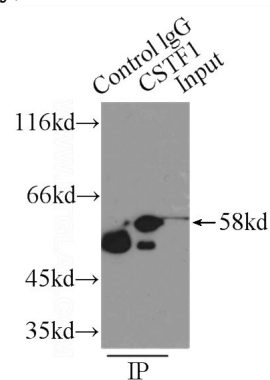
WB: 1:500-1:5000

IP: 1:200-1:2000

Validations



HeLa cells were subjected to SDS PAGE followed by western blot with Catalog No:109616(CSTF1 antibody) at dilution of 1:1000



IP Result of anti-CSTF1 (IP:Catalog No:109616, 2ug; Detection:Catalog No:109616 1:500) with NIH/3T3 cells lysate 2500ug.