

CHCHD7 antibody



Catalog Number: 109216

Product name

CHCHD7 antibody

Specificity

human, mouse, rat; other species not tested.

Antibody description

CHCHD7 Rabbit Polyclonal antibody. Positive IHC detected in human pancreas. Positive WB detected in mouse pancreas tissue, human placenta tissue. Observed molecular weight by Western-blot: 10kd

Preparation

This antibody was obtained by immunization of CHCHD7 recombinant protein (Accession Number: NM_024300). Purification method: Antigen affinity purified.

Formulation

PBS with 0.02% sodium azide and 50% glycerol pH 7.3.

Storage

Store at -20°C. DO NOT ALIQUOT

Clonality

Polyclonal

Ig Type

Rabbit IgG

Applications

ELISA, WB, IHC

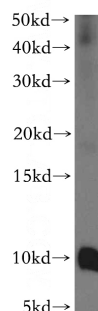
Dilutions

Recommended Dilution:

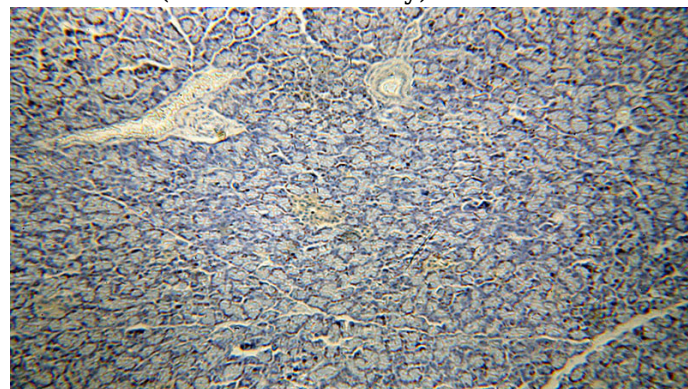
WB: 1:500-1:5000

IHC: 1:20-1:200

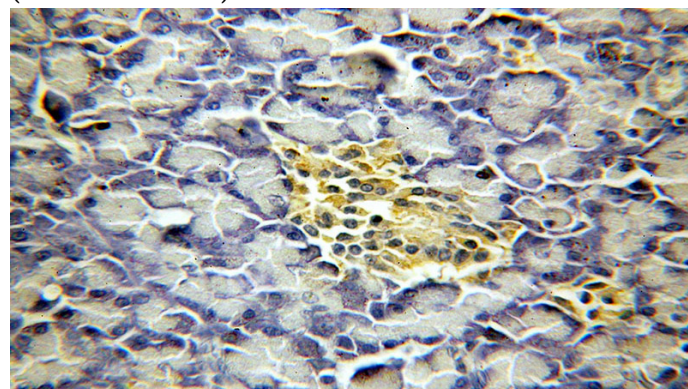
Validations



mouse pancreas tissue were subjected to SDS PAGE followed by western blot with Catalog No:109216(CHCHD7 antibody) at dilution of 1:500



Immunohistochemical of paraffin-embedded human pancreas using Catalog No:109216(CHCHD7 antibody) at dilution of 1:100 (under 10x lens)



Immunohistochemical of paraffin-embedded human pancreas using Catalog No:109216(CHCHD7 antibody) at dilution of 1:100 (under 40x lens)