

# HMGA1 Polyclonal Antibody



Catalog Number: 161216

## Product name

HMGA1 Polyclonal Antibody

## Specificity

Mouse, Rat

## Antibody description

Polyclonal antibody to HMGA1

## Preparation

Antigen: A synthetic peptide corresponding to a sequence within amino acids 1-100 of human HMGA1 (NP\_665908.1).

## Formulation

PBS with 0.02% sodium azide, 50% glycerol, pH7.3.

## Storage

Store at -20°C. Avoid freeze / thaw cycles.

## Clonality

Polyclonal

## Ig Type

Rabbit IgG

## Applications

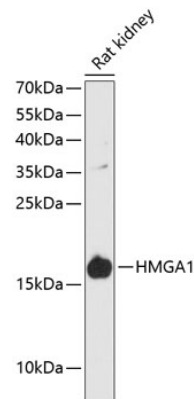
WB, IHC

## Dilutions

WB 1:1000 - 1:2000

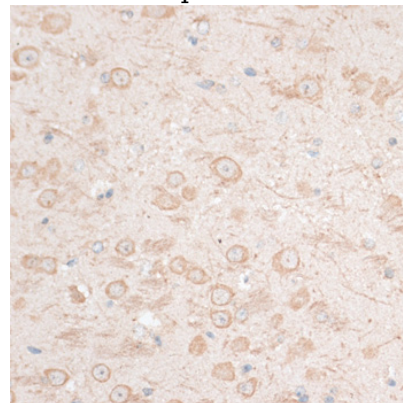
IHC 1:50 - 1:200

## Validations



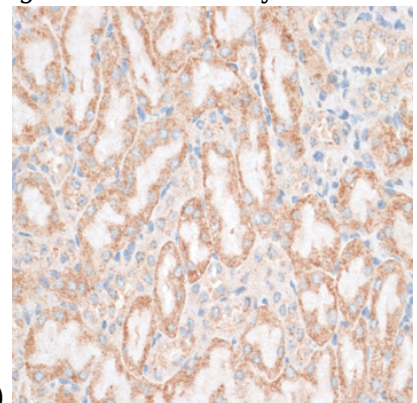
## Western blot - HMGA1 Polyclonal Antibody

Western blot analysis of extracts of various cell lines, using HMGA1 antibody at 1:3000 dilution. Secondary antibody: HRP Goat Anti-Rabbit IgG (H+L) at 1:10000 dilution. Lysates/proteins: 25ug per lane. Blocking buffer: 3% nonfat dry milk in TBST. Detection: ECL Basic Kit. Exposure time: 90s.



## Immunohistochemistry - HMGA1 Polyclonal Antibody

Immunohistochemistry of paraffin-embedded mouse brain using HMGA1 antibody at dilution of



1:100 (40x lens).

# HMGA1 Polyclonal Antibody



Catalog Number: 161216

---

Immunohistochemistry - HMGA1 Polyclonal Antibody

Immunohistochemistry of paraffin-embedded mouse kidney using HMGA1 antibody at dilution of 1:100 (40x lens).