

# EGFR (C-terminal) antibody

Catalog Number: 110216

## Product name

EGFR (C-terminal) antibody

IP: 1:200-1:2000

IHC: 1:20-1:200

## Specificity

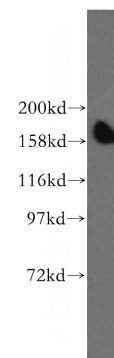
Human; other species not tested.

IF: 1:10-1:100

## Antibody description

EGFR (C-terminal) Rabbit Polyclonal antibody. Positive IP detected in A431 cells. Positive WB detected in A431 cells, HeLa cells. Positive IF detected in HeLa cells. Positive IHC detected in human skin cancer tissue. Observed molecular weight by Western-blot: 170 kDa

## Validations



## Preparation

This antibody was obtained by immunization of Peptide (Accession Number: NM\_001346897). Purification method: Antigen affinity purified.

A431 cells were subjected to SDS PAGE followed by western blot with Catalog No:110216(EGFR antibody) at dilution of 1:800

## Formulation

PBS with 0.02% sodium azide and 50% glycerol pH 7.3.

## Storage

Store at -20°C. DO NOT ALIQUOT

## Clonality

Polyclonal

## Ig Type

Rabbit IgG

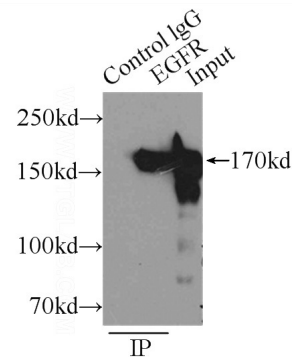
## Applications

ELISA, WB, IHC, IP, IF

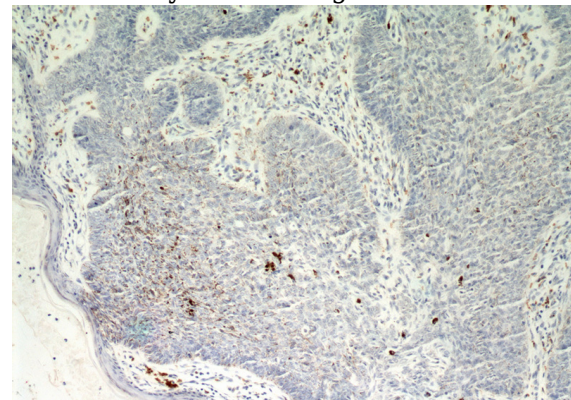
## Dilutions

Recommended Dilution:

WB: 1:200-1:2000



IP Result of anti-EGFR (IP:Catalog No:110216, 5ug; Detection:Catalog No:110216 1:500) with A431 cells lysate 3000ug.

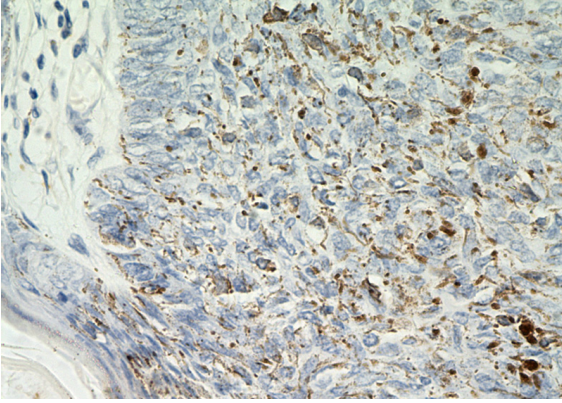


# EGFR (C-terminal) antibody

Catalog Number: 110216

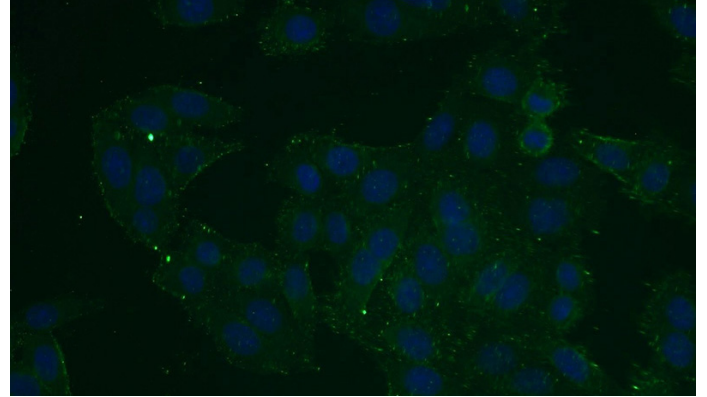
---

Immunohistochemical of paraffin-embedded human skin cancer using Catalog No:110216(EGFR antibody) at dilution of 1:50 (under 10x lens)



Immunohistochemical of paraffin-embedded human skin cancer using Catalog

No:110216(EGFR antibody) at dilution of 1:50 (under 40x lens)



Immunofluorescent analysis of HeLa cells using Catalog No:110216(EGFR Antibody) at dilution of 1:25 and Alexa Fluor 488-conjugated AffiniPure Goat Anti-Rabbit IgG(H+L)