

Anti-SH2D1A/SAP Rabbit antibody



Catalog Number: 166916

Product name

Anti-SH2D1A/SAP Rabbit antibody

Specificity

Human, Mouse, Rat

Antibody description

SH2D1A/SAP Rabbit polyclonal antibody

Preparation

Antigen: A synthetic peptide of human SH2D1A/SAP

Formulation

Supplied in 50nM Tris-Glycine(pH 7.4), 0.15M NaCl, 40%Glycerol, 0.01% sodium azide and 0.05% BSA.

Storage

Store at -20°C. Stable for 12 months from date of receipt.

Clonality

Polyclonal

Ig Type

Rabbit IgG

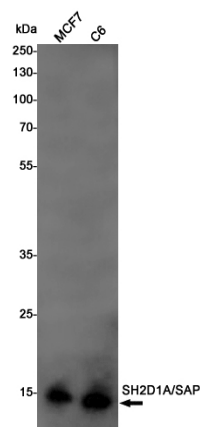
Applications

WB

Dilutions

WB: 1/1000-1/2000

Validations



Western blot detection of SH2D1A/SAP in MCF7,C6 cell lysates using SH2D1A/SAP Rabbit pAb(1:1000 diluted).Predicted band size:14KDa.Observed band size:14KDa.