

Anti-LIN28A (9G2) Mouse antibody



Catalog Number: 168516

Product name

Anti-LIN28A (9G2) Mouse antibody

Specificity

Human

Antibody description

LIN28A (9G2) Mouse monoclonal antibody

Preparation

Antigen: Purified recombinant fragment of LIN28 (aa93-209) expressed in E. Coli.

Formulation

Ascitic fluid containing 0.03% sodium azide.

Storage

Store at 4°C short term. Store at -20°C long term. Avoid freeze / thaw cycle.

Clonality

Monoclonal

Ig Type

Mouse IgG1

Applications

WB, ICC/IF

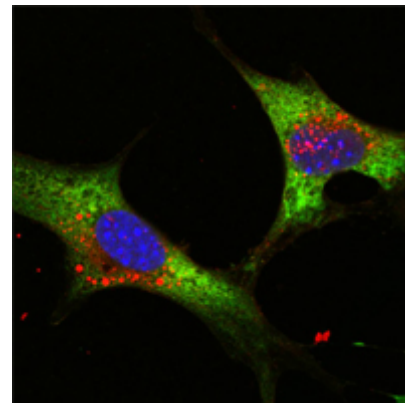
Dilutions

WB: 1/500 - 1/2000

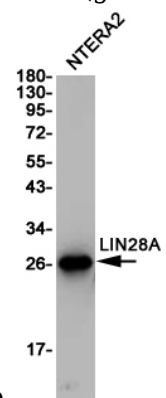
ICC: 1/200 - 1/1000

ELISA: 1/10000

Validations

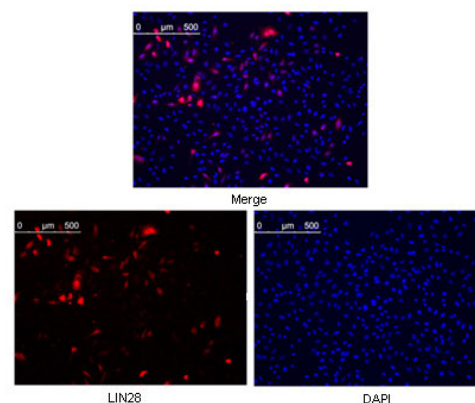


Confocal immunofluorescence analysis of NTERA-2 cells using LIN28 mouse mAb (green).



Blue: DRAQ5 fluorescent DNA dye.

Western blot detection of LIN28A in NTERA2 cell lysates using LIN28A (9G2) Mouse mAb(1:1000 diluted). Predicted band size: 23KDa. Observed band size: 23KDa.

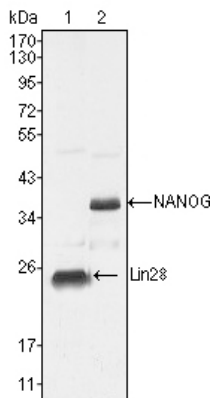


Confocal immunofluorescence analysis of methanol fixed HeLa cells were transfected with pMX construct of human LIN28, cells were analyzed ~62 hours after transfection.

Anti-LIN28A (9G2) Mouse antibody



Catalog Number: 168516



Western blot analysis using LIN28 mouse mAb against NTERA-2 cell lysate (1).