

# Anti-IL1R2 antibody

Catalog Number: 175516

## Product name

Anti-IL1R2 antibody

## Specificity

Human, Mouse, Rat, Dog

## Antibody description

Rabbit polyclonal antibody to IL1R2

## Preparation

This antigen of this antibody was klh conjugated synthetic peptide derived from human il-1r ii 301-398/398

## Formulation

Liquid, 0.01M TBS(pH7.4) with 1% BSA, 0.03% Proclin300 and 50% Glycerol.

## Storage

Store at -20°C for one year. Avoid repeated freeze/thaw cycles. The lyophilized antibody is stable at room temperature for at least one month and for greater than a year when kept at -20°C. When reconstituted in sterile pH 7.4 0.01M PBS or diluent of antibody the antibody is stable for at least two weeks at 2-4°C.

## Clonality

Polyclonal

## Ig Type

Rabbit IgG

## Applications

WB, IHC-P, FC

## Dilutions

WB:1:500-2000

IHC-P:1:400-800

FC:1µg/test

## Validations

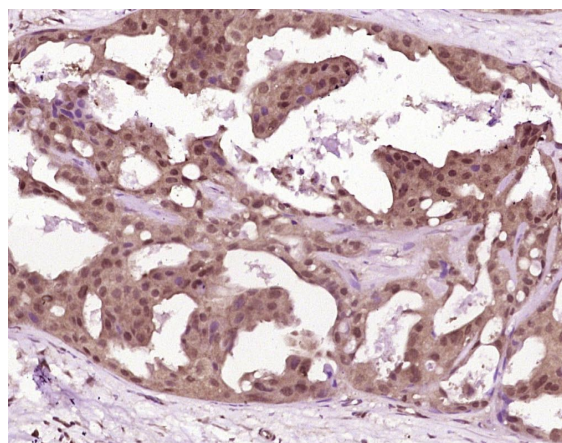


Fig1: Paraformaldehyde-fixed, paraffin embedded (Human breast carcinoma); Antigen retrieval by boiling in sodium citrate buffer (pH6.0) for 15min; Block endogenous peroxidase by 3% hydrogen peroxide for 20 minutes; Blocking buffer (normal goat serum) at 37°C for 30min; Antibody incubation with (IL-1R2) Polyclonal Antibody, Unconjugated at 1:400 overnight at 4°C, followed by operating according to SP Kit(Rabbit) (sp-0023) instructions and DAB staining.

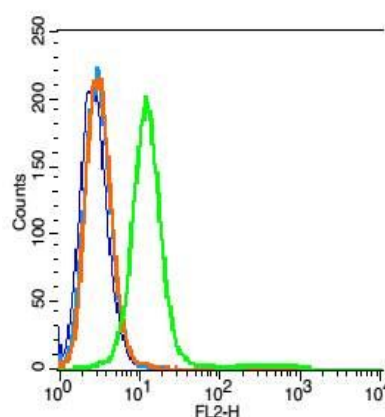


Fig2: Blank control: RSC96 cells(blue).; Primary Antibody: Rabbit Anti-IL-1R2 antibody, Dilution: 1µg in 100 µL 1X PBS containing 0.5% BSA;; Isotype Control Antibody: Rabbit IgG (orange), used under the same conditions.; Secondary Antibody: Goat anti-rabbit IgG-PE(white blue), Dilution: 1:200 in 1 X PBS containing 0.5% BSA.

# Anti-IL1R2 antibody



Catalog Number: 175516

---

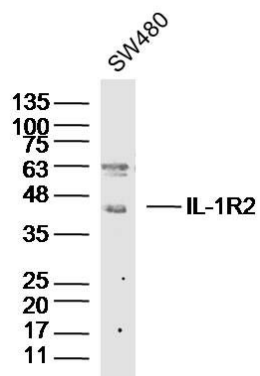


Fig3: Sample: SW480 Cell (Human) Lysate at 40 ug; Primary: Anti- IL-1R2 at 1/300 dilution; Secondary: IRDye800CW Goat Anti-Rabbit IgG at 1/20000 dilution; Predicted band size: 44 kD; Observed band size: 44 kD