

# Anti-PPIL1 antibody



Catalog Number: 104516

## Product name

Anti-PPIL1 antibody

## Immunogen

[Human PPIL1 \(His Tag\) recombinant protein](#)

## Specificity

Human PPIL1

## Antibody description

Rabbit polyclonal to PPIL1

## Preparation

Produced in rabbits immunized with purified, recombinant Human PPIL1 (rh PPIL1; Q9Y3C6; Met1-Gly166). PPIL1 specific IgG was purified by Human PPIL1 affinity chromatography.

## Formulation

0.2 µm filtered solution in PBS with 5% trehalose

## Storage

This antibody can be stored at 2°C-8°C for one month without detectable loss of activity. Antibody products are stable for twelve months from date of receipt when stored at -20°C to -80°C.

Preservative-Free.

Sodium azide is recommended to avoid contamination (final concentration 0.05%-0.1%). It is toxic to cells and should be disposed of properly. Avoid repeated freeze-thaw cycles.

## Clonality

Polyclonal

## Ig Type

Rabbit IgG

## Applications

ELISA, WB, IHC-P, IP

## Dilutions

WB: 5-10 µg/ml

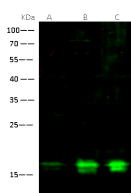
ELISA: 0.1-0.2 µg/mL

This antibody can be used at 0.1-0.2 µg/mL with the appropriate secondary reagents to detect Human PPIL1. The detection limit for Human PPIL1 is < 0.039 ng/well.

IHC-P: 0.1-1 µg/ml

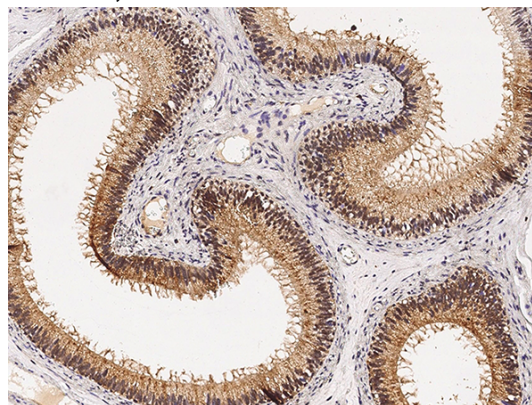
IP: 1-4 µg/mg of lysate

## Validations



Lanes	A	B	C
Items			
Sample (whole cell lysate)	U87-MG	HeLa	K562
Sample Volume (µg/lane)	30	30	30
Gel	13%SDS-PAGE reducing gel		
Recommended concentration	5-10 µg/ml		
Secondary Antibody	Dylight 800 labeled Antibody to Rabbit IgG (rhL), at 1:5000 dilution		
Developed using Odyssey imaging system.			
Explanation	Predicted band size : 18 kDa Observed band size : 17 kDa		

PPIL1 Antibody, Rabbit PAb, Antigen Affinity Purified, Western blot



PPIL1 Antibody, Rabbit PAb, Antigen Affinity Purified, Immunohistochemistry

Immunochemical staining of human PPIL1 in human epididymis with rabbit polyclonal antibody

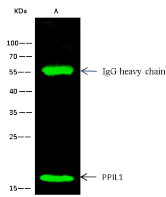
# Anti-PPIL1 antibody



Catalog Number: 104516

(0.2 µg/mL, formalin-fixed paraffin embedded

PPIL1 Antibody, Rabbit PAb, Antigen Affinity Purified, Immunoprecipitation



Items	Lanes
Sample (whole cell lysate)	A HepG2
Sample quantity	0.5 mg
IP antibody quantity	2 µg
Protein G agarose	15 µl of 50% Protein G Agarose
Gel	18% SDS-PAGE reducing gel
Primary antibody	PPIL1 antibody at 10 µg/ml [Cat# 14163-PP02]
Secondary antibody	Dylight 800-labeled antibody to rabbit IgG (H-L) at 1:5000 dilution

sections).