

Human CYTL1 / Cytokine-like 1 (Fc Tag) recombinant protein



Catalog Number: 502516

General Information

Gene Name Synonym

Protein C17

Protein Construction

A DNA sequence encoding the human CYTL1 (NP_061129.1) (Met1-Arg136) was expressed with the Fc region of mouse IgG1 at the C-terminus.

Organism

Human

Expression Host

Human Cells

QC Testing

Purity

> 90 % as determined by SDS-PAGE.

Endotoxin

< 1.0 EU per μg protein as determined by the LAL method.

Stability

Samples are stable for up to twelve months from date of receipt at -70°C

Predicted N terminal

Thr 23

Molecular Mass

The recombinant human CYTL1 consists 348 amino acids and predicts a molecular mass of 39.8 kDa.

Formulation

Lyophilized from sterile PBS, pH 7.4.

1. 5 % trehalose and mannitol are added as protectants before lyophilization.

2. Please contact us for any concerns or special requirements.

Usage Guide

Storage

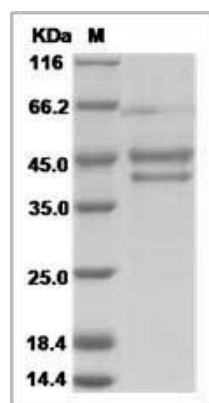
Store it under sterile conditions at -20°C to -80°C .

It is recommended that the protein be aliquoted for optimal storage. Avoid repeated freeze-thaw cycles.

Reconstitution

Adding sterile water, prepare a stock solution of 0.25 mg/ml. Concentration is measured by UV-Vis.

SDS-PAGE



Human CYTL1 / Cytokine-like 1 Protein (Fc Tag)