

# Anti-ASH2L Rabbit antibody



Catalog Number: 168816

## Product name

Anti-ASH2L Rabbit antibody

## Specificity

Human, Rat

## Antibody description

ASH2L Rabbit monoclonal antibody

## Preparation

Antigen: A synthetic peptide of human ASH2L

## Formulation

Supplied in 50nM Tris-Glycine(pH 7.4), 0.15M NaCl, 40%Glycerol, 0.01% sodium azide and 0.05% BSA.

## Storage

Store at 4°C short term. Aliquot and store at -20°C long term. Avoid freeze / thaw cycle.

## Clonality

Monoclonal

## Ig Type

Rabbit IgG

## Applications

WB, ICC/IF, FC, IP

## Dilutions

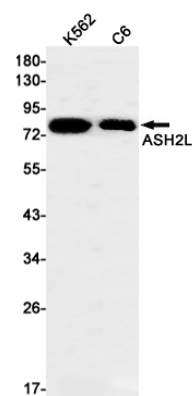
1:1000-1:5000

1:20-1:50

1:20

1:20

## Validations



Western blot detection of ASH2L in K562,C6 cell lysates using ASH2L Rabbit mAb(1:1000 diluted).Predicted band size:69kDa.Observed band size:80kDa.