

# Anti-SLC31A1/CTR1 Rabbit antibody



Catalog Number: 167816

## Product name

Anti-SLC31A1/CTR1 Rabbit antibody

## Specificity

Human, Mouse, Rat

## Antibody description

SLC31A1/CTR1 Rabbit monoclonal antibody

## Preparation

Antigen: A synthetic peptide of human SLC31A1/CTR1

## Formulation

50nM Tris-Glycine(pH 7.4), 0.15M NaCl, 40%Glycerol, 0.01% sodium azide and 0.05% BSA

## Storage

Store at 4°C short term. Store at -20°C long term. Avoid freeze / thaw cycle.

## Clonality

Monoclonal

## Ig Type

Rabbit IgG

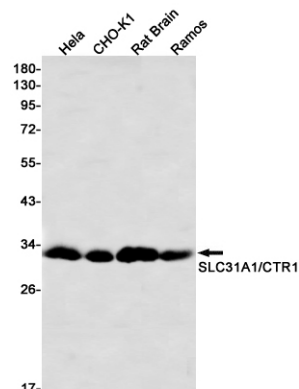
## Applications

WB

## Dilutions

WB: 1/1000

## Validations



Western blot detection of SLC31A1/CTR1 in HeLa, CHO-K1, Rat Brain, Ramos cell lysates using SLC31A1/CTR1 Rabbit mAb(1:1000 diluted). Predicted band size: 21 kDa. Observed band size: 21 kDa.