

MRPL2 antibody



Catalog Number: 112816

Product name

MRPL2 antibody

Specificity

human, mouse, rat; other species not tested.

Antibody description

MRPL2 Rabbit Polyclonal antibody. Positive WB detected in human liver tissue. Observed molecular weight by Western-blot: 33kd

Preparation

This antibody was obtained by immunization of MRPL2 recombinant protein (Accession Number: NM_015950). Purification method: Antigen affinity purified.

Formulation

PBS with 0.02% sodium azide and 50% glycerol pH 7.3.

Storage

Store at -20°C. DO NOT ALIQUOT

Clonality

Polyclonal

Ig Type

Rabbit IgG

Applications

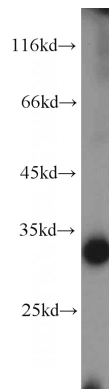
ELISA, WB

Dilutions

Recommended Dilution:

WB: 1:200-1:2000

Validations



human liver tissue were subjected to SDS PAGE followed by western blot with Catalog No:112816(MRPL2 antibody) at dilution of 1:500