

Anti-NOXRED1 antibody



Catalog Number: 142816

Product name

Anti-NOXRED1 antibody

Specificity

Human NOXRED1

Antibody description

Rabbit Polyclonal to Human NOXRED1

Preparation

Produced in rabbits immunized with a synthetic peptide corresponding to the center region of the Human NOXRED1, and purified by antigen affinity chromatography.

Formulation

0.2 μ m filtered solution in PBS

Storage

This antibody can be stored at 2°C-8°C for one month without detectable loss of activity. Antibody products are stable for twelve months from date of receipt when stored at -20°C to -80°C.

Preservative-Free.

Sodium azide is recommended to avoid contamination (final concentration 0.05%-0.1%). It is toxic to cells and should be disposed of properly. Avoid repeated freeze-thaw cycles.

Clonality

Polyclonal

Ig Type

Rabbit IgG

Applications

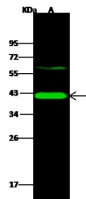
WB, IP

Dilutions

WB: 1-5 μ g/ml

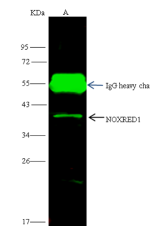
IP: 1-4 μ l/mg of lysate

Validations



Items	Lanes	A
Sample (whole cell lysate)		H11080
Sample Volume (μ g/lane)		30
Gel		13% SDS-PAGE reducing gel
Recommended Concentration		1.5 μ g/ml
Secondary Antibody		Dylight 800-labeled Antibody to Rabbit IgG (H+L), at 1:5000 dilution.
Explanation		Developed using Odyssey imaging system. Predicted band size : 40 kDa Observed band size : 40 kDa Additional bands at : 62 kDa (We are unsure as to the identity of these extra bands.)

Human NOXRED1 Western blot (WB) 15625



Items	Lanes	A
Sample (whole cell lysate)		HeK293T
Sample quantity		0.5 mg
IP antibody quantity		4 μ L
Protein G agarose		15 μ l of 50% Protein G agarose
Gel		13% SDS-PAGE reducing gel
Primary antibody		KLH-SMCC-SINO3350-KLH-SMCC-SINO3370 antibody at 10 μ g/ml
Secondary antibody		Dylight 800-labeled antibody to rabbit IgG (H+L), at 1:5000 dilution

Human NOXRED1 Immunoprecipitation(IP) 15626