

# CMTM8 antibody



Catalog Number: 109416

## Product name

CMTM8 antibody

WB: 1:500-1:5000

IP: 1:200-1:1000

## Specificity

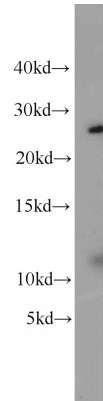
Human, Mouse, Rat; other species not tested.

IHC: 1:20-1:200

## Antibody description

CMTM8 Rabbit Polyclonal antibody. Positive IHC detected in human liver tissue, human pancreas cancer tissue, human pancreas tissue. Positive IP detected in mouse liver tissue. Positive WB detected in mouse liver tissue, mouse pancreas tissue. Observed molecular weight by Western-blot: 25-28 kDa

## Validations



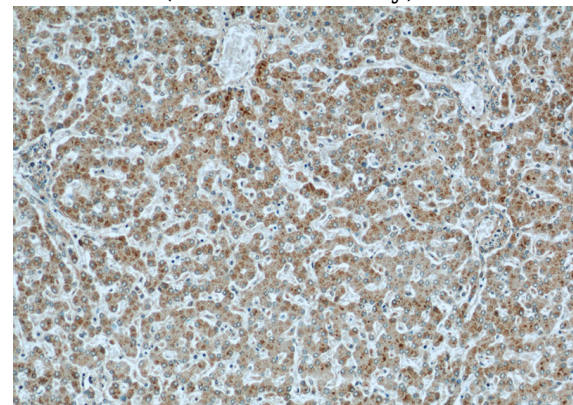
## Preparation

This antibody was obtained by immunization of CMTM8 recombinant protein (Accession Number: NM\_178868). Purification method: Antigen affinity purified.

mouse liver tissue were subjected to SDS PAGE followed by western blot with Catalog No:109416(CMTM8 antibody) at dilution of 1:1000

## Formulation

PBS with 0.1% sodium azide and 50% glycerol pH 7.3.



## Storage

Store at -20°C. DO NOT ALIQUOT

## Clonality

Polyclonal

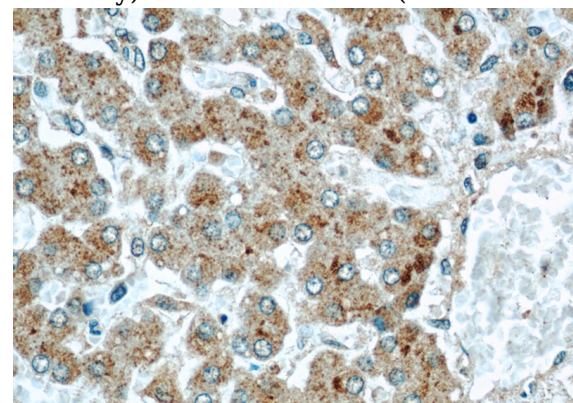
Immunohistochemical of paraffin-embedded human liver using Catalog No:109416(CMTM8 antibody) at dilution of 1:50 (under 10x lens)

## Ig Type

Rabbit IgG

## Applications

ELISA, IHC, IP, WB



## Dilutions

Recommended Dilution:

# CMTM8 antibody

Catalog Number: 109416

---

Immunohistochemical of paraffin-embedded human liver using Catalog No:109416(CMTM8 antibody) at dilution of 1:50 (under 40x lens)

IP Result of anti-CMTM8 (IP:Catalog No:109416, 4ug; Detection:Catalog No:109416 1:300) with mouse liver tissue lysate 6800ug.

