

# Anti-Phospho-p38 (Thr180/Tyr182) Rabbit antibody



Catalog Number: 167416

## Product name

Anti-Phospho-p38 (Thr180/Tyr182) Rabbit antibody

IHC: 1/100 - 1/300

ELISA: 1/5000

## Specificity

Human, Mouse, Rat, Guinea Pig

## Antibody description

Phospho-p38 (Thr180/Tyr182) Rabbit polyclonal antibody

## Preparation

Antigen: The antiserum was produced against synthesized peptide derived from human p38 MAPK around the phosphorylation site of Thr179 and Tyr181. AA range:151-200

## Formulation

Liquid in PBS containing 50% glycerol, 0.5% BSA and 0.02% sodium azide.

## Storage

Store at 4°C short term. Store at -20°C long term. Avoid freeze / thaw cycle.

## Clonality

Polyclonal

## Ig Type

Rabbit IgG

## Applications

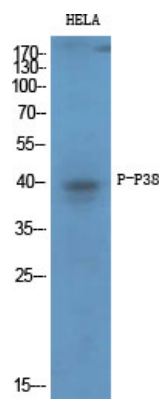
ICC/IF, WB, IHC-P, ELISA

## Dilutions

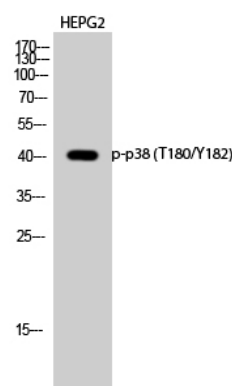
IF: 1/50-200

WB: 1/500 - 1/2000

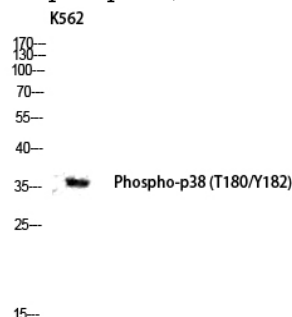
## Validations



Western Blot analysis of HELA cells using Phospho-p38 (T180/Y182) Polyclonal Antibody



Western Blot analysis of HEPG2 cells using Phospho-p38 (T180/Y182) Polyclonal Antibody



Western blot analysis of K562 cells using Phospho-p38 (T180/Y182) antibody.