

# SMAD2 antibody

Catalog Number: 115416

## Product name

SMAD2 antibody

## Specificity

Human, Mouse, Rat; other species not tested.

## Antibody description

SMAD2 Rabbit Polyclonal antibody. Positive IP detected in HepG2 cells. Positive WB detected in HeLa cells, HepG2 cells, Jurkat cells, K-562 cells, mouse skeletal muscle tissue, rat skeletal muscle tissue. Positive IF detected in HepG2 cells. Positive IHC detected in human endometrial cancer tissue, human cervical cancer tissue, human heart tissue. Observed molecular weight by Western-blot: 58kd

## Preparation

This antibody was obtained by immunization of SMAD2 recombinant protein (Accession Number: XM\_006722451). Purification method: Antigen affinity purified.

## Formulation

PBS with 0.02% sodium azide and 50% glycerol pH 7.3.

## Storage

Store at -20°C. DO NOT ALIQUOT

## Clonality

Polyclonal

## Ig Type

Rabbit IgG

## Applications

ELISA, WB, IHC, IF, IP

## Dilutions

Recommended Dilution:

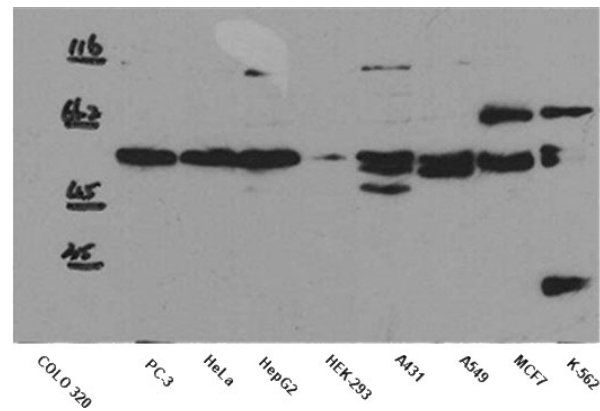
WB: 1:500-1:5000

IP: 1:500-1:5000

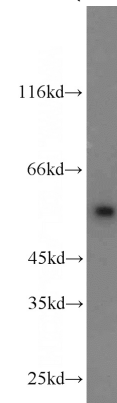
IHC: 1:20-1:200

IF: 1:10-1:100

## Validations



WB result of anti-SMAD2 (Catalog No:115416) in

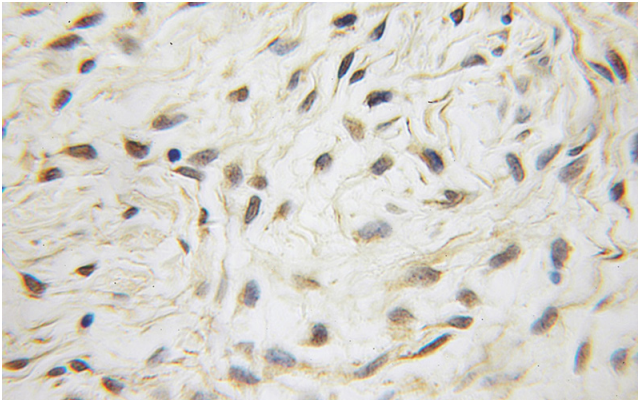


different cell lysates.

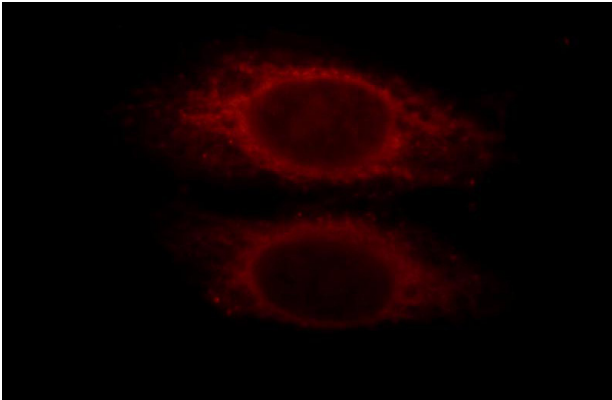
HeLa cells were subjected to SDS PAGE followed by western blot with Catalog No:115416(SMAD2 antibody) at dilution of 1:1000

# SMAD2 antibody

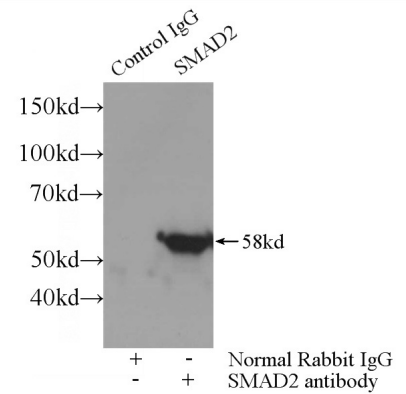
Catalog Number: 115416



Immunohistochemical of paraffin-embedded human endometrial cancer using Catalog No:115416(SMAD2 antibody) at dilution of 1:50 (under 10x lens)



Immunofluorescent analysis of HepG2 cells, using SMAD2 antibody Catalog No:115416 at 1:25 dilution and Rhodamine-labeled goat anti-rabbit



IgG (red).

IP Result of anti-SMAD2 (IP:Catalog No:115416, 3ug; Detection:Catalog No:115416 1:1000) with HepG2 cells lysate 3000ug.