

EXPH5 antibody

Catalog Number: 110416

Product name

EXPH5 antibody

Specificity

Human; other species not tested.

Antibody description

EXPH5 Rabbit Polyclonal antibody. Positive IHC detected in human oesophagus tissue, human skin tissue. Positive WB detected in A431 cells. Observed molecular weight by Western-blot: 222-240 kDa

Preparation

This antibody was obtained by immunization of EXPH5 recombinant protein (Accession Number: NM_015065). Purification method: Antigen Affinity purified.

Formulation

PBS with 0.02% sodium azide and 50% glycerol pH 7.3.

Storage

Store at -20°C. DO NOT ALIQUOT

Clonality

Polyclonal

Ig Type

Rabbit IgG

Applications

ELISA, WB, IHC

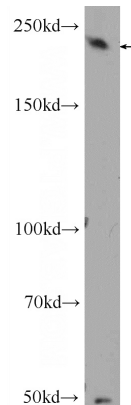
Dilutions

Recommended Dilution:

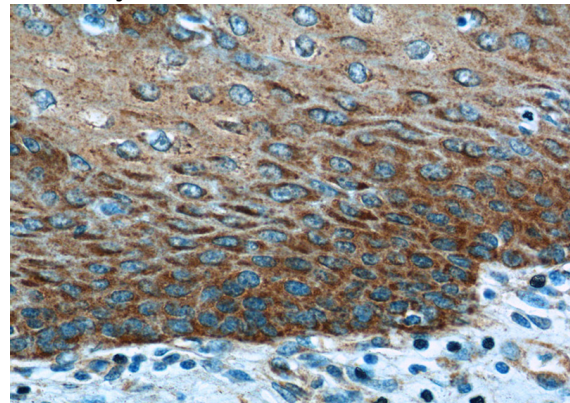
WB: 1:200-1:1000

IHC: 1:20-1:200

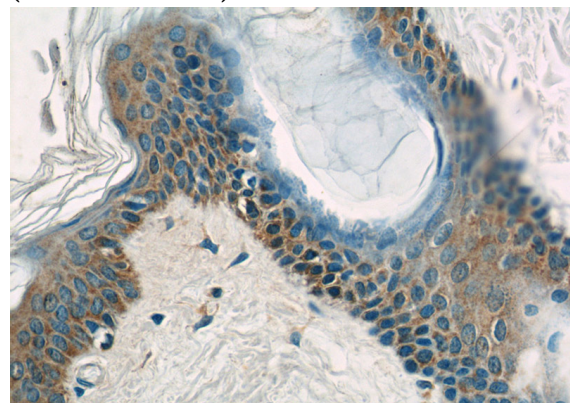
Validations



A431 cells were subjected to SDS PAGE followed by western blot with Catalog No:110416(EXPH5 Antibody) at dilution of 1:300



Immunohistochemistry of paraffin-embedded human oesophagus tissue slide using Catalog No:110416(EXPH5 Antibody) at dilution of 1:50 (under 40x lens)



Immunohistochemistry of paraffin-embedded human skin tissue slide using Catalog No:110416(EXPH5 Antibody) at dilution of 1:50 (under 40x lens)

EXPH5 antibody



Catalog Number: 110416

No:110416(EXPH5 Antibody) at dilution of 1:50 (under 40x lens)