

# Anti-Aurora B Rabbit antibody



Catalog Number: 167016

## Product name

Anti-Aurora B Rabbit antibody

## Specificity

Human

## Antibody description

Aurora B Rabbit polyclonal antibody

## Preparation

Antigen: A synthetic peptide of human Aurora B

## Formulation

Supplied in 50nM Tris-Glycine(pH 7.4), 0.15M NaCl, 40%Glycerol, 0.01% sodium azide and 0.05% BSA.

## Storage

Store at -20°C. Stable for 12 months from date of receipt.

## Clonality

Polyclonal

## Ig Type

Rabbit IgG

## Applications

WB, IHC-P, ICC/IF, IP

## Dilutions

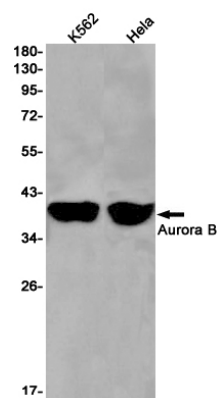
WB: 1/2000

IHC: 1/50

ICC/IF: 1/20

IP: 1/20

## Validations



Western blot detection of Aurora B in K562, HeLa cell lysates using Aurora B Rabbit pAb(1:1000 diluted). Predicted band size: 39kDa. Observed band size: 39kDa.