

# SUMO3 Polyclonal Antibody



Catalog Number: 164016

## Product name

SUMO3 Polyclonal Antibody

## Specificity

Human, Mouse, Rat

## Antibody description

Polyclonal antibody to SUMO3

## Preparation

Antigen: A synthetic peptide of human SUMO3

## Formulation

PBS with 0.02% sodium azide, 50% glycerol, pH7.3.

## Storage

Store at -20°C. Avoid freeze / thaw cycles.

## Clonality

Polyclonal

## Ig Type

Rabbit IgG

## Applications

WB, IHC, IF

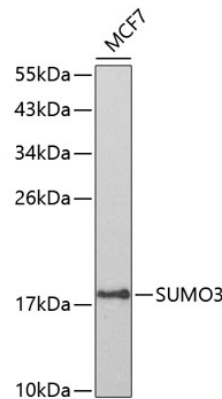
## Dilutions

WB 1:1000 - 1:2000

IHC 1:50 - 1:100

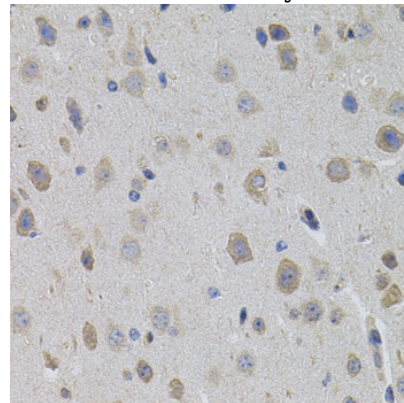
IF 1:100 - 1:300

## Validations



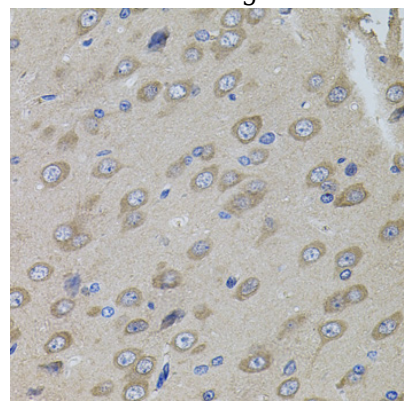
Western blot - SUMO3 Polyclonal Antibody

Western blot analysis of extracts of MCF-7 cells, using SUMO3 antibody at 1:800 dilution. Secondary antibody: HRP Goat Anti-Rabbit IgG (H+L) at 1:10000 dilution. Lysates/proteins: 25ug per lane. Blocking buffer: 3% nonfat dry milk in TBST.



Immunohistochemistry - SUMO3 Polyclonal Antibody

Immunohistochemistry of paraffin-embedded mouse brain using SUMO3 antibody (40x lens).



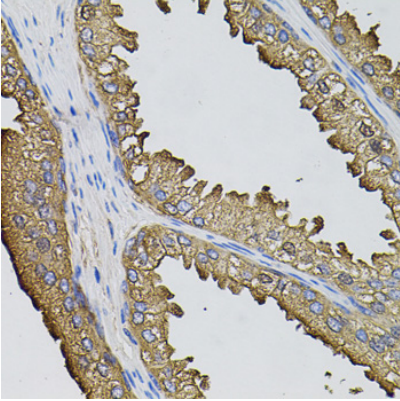
# SUMO3 Polyclonal Antibody

Catalog Number: 164016

---

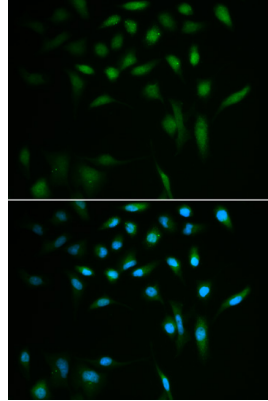
Immunohistochemistry - SUMO3 Polyclonal Antibody

Immunohistochemistry of paraffin-embedded rat brain using SUMO3 antibody (40x lens).



Immunohistochemistry - SUMO3 Polyclonal Antibody

Immunohistochemistry of paraffin-embedded human prostate using SUMO3 antibody (40x lens).



Immunofluorescence - SUMO3 Polyclonal Antibody

Immunofluorescence analysis of A549 cells using SUMO3 antibody . Blue: DAPI for nuclear staining.