

# DRD2 antibody

Catalog Number: 110016

## Product name

DRD2 antibody

## Specificity

Human, Mouse, Rat; other species not tested.

## Antibody description

DRD2 Rabbit Polyclonal antibody. Positive IP detected in SH-SY5Y cells. Positive WB detected in SH-SY5Y cells, mouse brain tissue. Observed molecular weight by Western-blot: 47-55 kDa

## Preparation

This antibody was obtained by immunization of Peptide (Accession Number: NM\_016574). Purification method: Antigen affinity purified.

## Formulation

PBS with 0.02% sodium azide and 50% glycerol pH 7.3.

## Storage

Store at -20°C. DO NOT ALIQUOT

## Clonality

Polyclonal

## Ig Type

Rabbit IgG

## Applications

ELISA, WB, IP

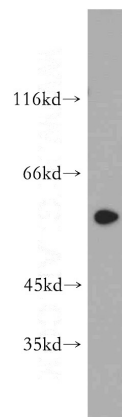
## Dilutions

Recommended Dilution:

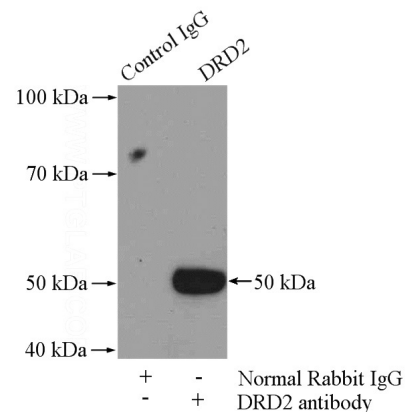
WB: 1:200-1:2000

IP: 1:200-1:1000

## Validations



SH-SY5Y cells were subjected to SDS PAGE followed by western blot with Catalog No:110016(DRD2 antibody) at dilution of 1:200



IP Result of anti-DRD2 (IP:Catalog No:110016, 4ug; Detection:Catalog No:110016 1:300) with SH-SY5Y cells lysate 3000ug.