

Anti-Tmem39a antibody

Catalog Number: 176706

Product name

Anti-Tmem39a antibody

Specificity

Human, Mouse

Antibody description

Rabbit polyclonal antibody to Tmem39a

Preparation

This antigen of this antibody was peptide

Formulation

Liquid, 1*PBS (pH7.4), 0.2% BSA, 40% Glycerol.
Preservative: 0.05% Sodium Azide.

Storage

Store at +4°C after thawing. Aliquot store at -20°C or -80°C. Avoid repeated freeze / thaw cycles.

Clonality

Polyclonal

Ig Type

Rabbit IgG

Applications

ICC, IHC-P, FC

Dilutions

ICC: 1:50-1:200

IHC-P: 1:50-1:200

FC: 1:50-1:100

Validations

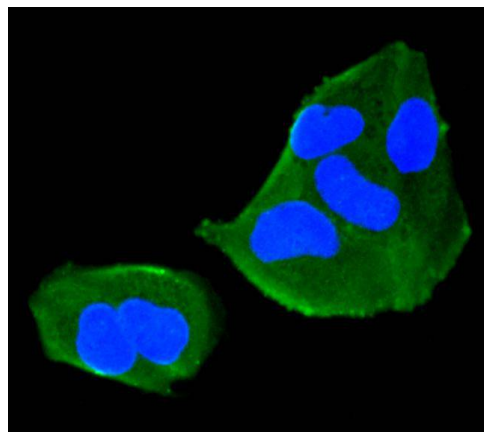


Fig1: Immunocytochemical staining of HeLa cells using anti-TMEM39a rabbit polyclonal antibody.

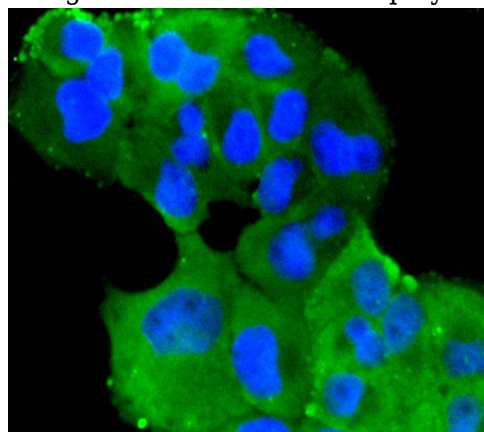
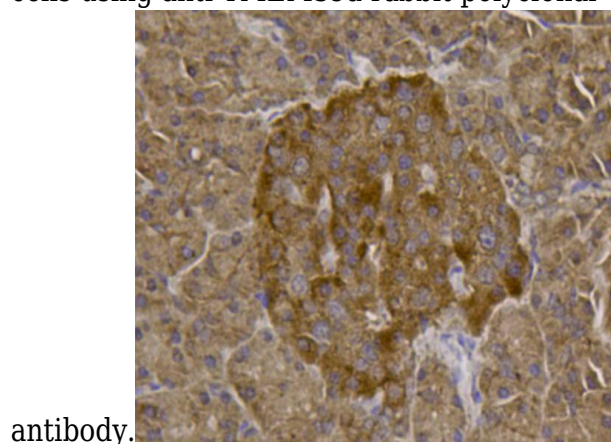


Fig2: Immunocytochemical staining of PANC-1 cells using anti-TMEM39a rabbit polyclonal



antibody.

Fig3: Immunohistochemical analysis of paraffin-embedded human pancreas tissue using anti-TMEM39a rabbit polyclonal antibody.

Anti-Tmem39a antibody

Catalog Number: 176706

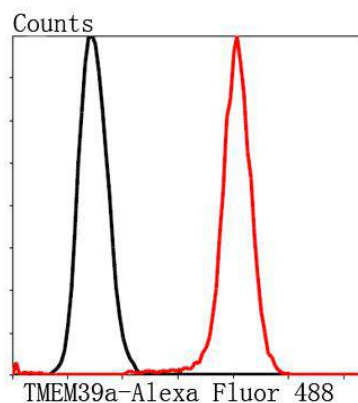


Fig4: Flow cytometric analysis of HeLa cells with TMEM39a antibody at 1/100 dilution (blue) compared with an unlabelled control (cells without incubation with primary antibody; red). Alexa Fluor 488-conjugated Goat anti rabbit IgG was used as the secondary antibody.